

EP UNITS

Utilizing our proven medium pressure lamp technology, the EP-type UV systems offer a high quality product at a very competitive price. Suitable for smaller pools and whirlpools with flows from 60 – 500 gpm and flange sizes from 2" – 6".

Treatment Chamber

UV treatment chambers are designed for installation into the pipe work after the filters and heaters, but before any chemical dosing. Please refer to the EP Units Technical Specifications document for chamber dimensions and clearance requirements.

The UV chamber is manufactured from polished 316L stainless steel and is flanged with ANSI 150 RF flanges for easy installation. Temperature probes, UV monitor probes, and a manual wiper are all included.

Pressure ratings on the unit are 150 psi, and pressure drop across the unit is minimal.

Control System

The control system is located in a NEMA 12 (IP54) rated panel.

As a standard, it is supplied with a 15' cable for connection to the treatment chamber.

The power supply (PSU) and control cabinet is powered with the latest NOVA microprocessor control unit. Simple control, and operator configuration allow easy, uncomplicated operation of the unit by an operator. Includes a strainer as standard.

Auto power restart, pump and valve interfaces, process interrupt and low power overnight operation are all features specifically designed for use on swimming pools and waterparks.

EP Units – designed to be the best.



The treatment chamber has been designed for the simplest installation into any pipe work system. The compact design allows existing facilities to be easily upgraded with minimum site work.



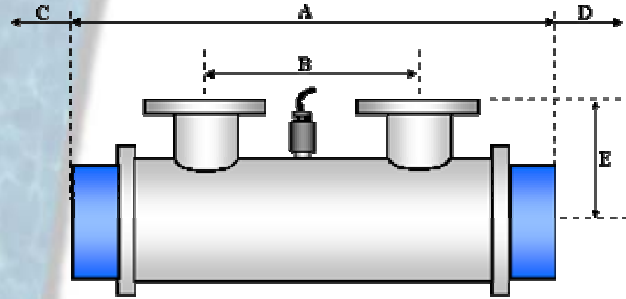
EP CONTROL UNIT TECHNICAL SPECIFICATIONS



TYPE	SUPPLY	WEIGHT	DIMENSIONS		
			Width	Height	Depth
NOVA-A	208/220v 60hz 1ph	90lbs	20"	20"	8¼"
NOVA-B	220v 60hz 1ph	95lbs	20"	20"	8¼"
NOVA-C	480/460v 60hz 3ph	105lbs	20"	20"	8¼"
MATERIAL	Carbon Steel		IP Rating	IP54	
COMPLETE WITH					
RCD protection			Over temperature Protection		
UV Monitoring			Manual wiper		
NOVA Electronic control					
Simple START STOP and RESET buttons			UV Output, Lamp Current and Temperature display		
Lamp Running, Interlock and lamp change LEDES			Fault display for Lamp, Ground Fault, Over temperature and Wiper		
Auto restart on power failure			Valve and Pump interface contacts		
Half power operation for low pool use periods			Separate password protected engineer functions		

TECHNICAL SPECIFICATIONS

TREATMENT CELL

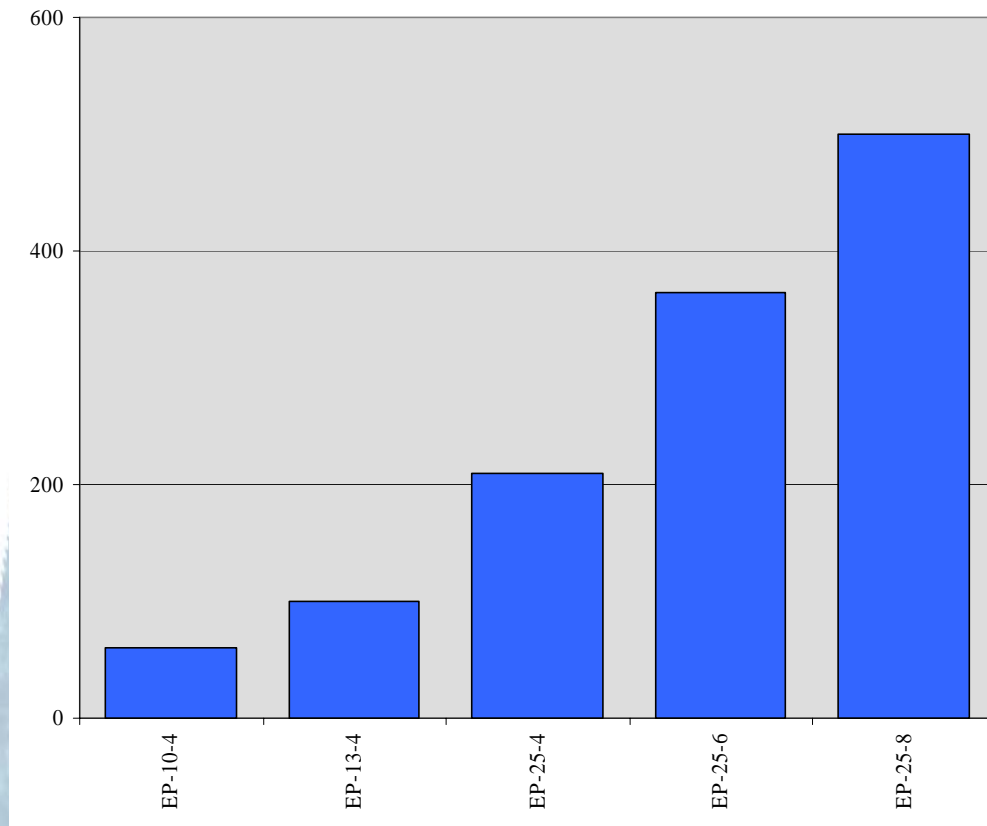


TYPE	BRANCH	LAMP	FLOW (GPM)	WEIGHT (Dry/Wet)	DIMENSIONS & ACCESS					PANEL TYPE
					A	B	C	D*	E	
EP-10-4	2"	1.0kW	60	80/100	20"	8"	14"	6"	7"	NOVA-A
EP-13-4	2"	1.3kW	100	90/105	24¼"	11"	16"	6"	7"	NOVA-B
EP-25-4	3"	2.5kW	210	95/110	28¼"	13"	16"	6"	7"	NOVA-C
EP-25-6	4"	2.5kW	365	130/165	28¼"	12"	16"	6"	8"	NOVA-C
EP-25-8	6"	2.5kW	500	140/295	32¼"	14"	18"	6"	10"	NOVA-C
MATERIAL		316 Stainless steel		FLANGE TYPE		ANSI 150 RF				
PRESSURE DROP		Less than 0.6 PSI		WIPER		Manual				
PRESSURE RATING		60PSI (90 PSI test)		STRAINER		Supplied loose				

Dimension D = Space Required for Manual Wiper. Please note you will need an additional clearance equal to the "A" dimension on the wiper end to operate the manual wiper. The dimension C is the required space/clearance to remove or install the lamp.

EP Units Performance Chart

Pipe	Model	Flow (GPM)
2"	EP-10-4	60
2"	EP-13-4	100
3"	EP-25-4	210
4"	EP-25-6	365
6"	EP-25-8	500



Flow rates are based upon pipe velocities not exceeding 9' per sec