

POOL EQUIPMENT FOR COMPETITION, COMPLIANCE, AND ADVENTURE.



SPECTRUM
AQUATICS®
A PLAYCORE Company

ABOUT US

Since 1972, Spectrum Aquatics® has designed and manufactured high-quality custom rails, ADA lifts and commercial grade pool deck equipment. We are pleased to introduce an entirely new line of products to create the ultimate Aquatic Adventure Zone™ at your facility, including: poolside slides, climbing walls, and basketball equipment. Spectrum has innovative products, skilled employees, knowledgeable engineers and an excellent customer service and sales staff.

Spectrum Aquatics® provides exceptional support to customers. We take pride in offering you top notch service and assisting you in finding the best solutions to meet your individual requirements. Spectrum Aquatics® strives to consistently exceed expectations and be your total solution provider. From inquiry to installation, Spectrum Aquatics® is here for you and the aquatics community.

Spectrum is highly regarded within the pool and spa industry and is acknowledged for:

- Quality products with competitive pricing
- Expedient delivery
- Leadership in innovative products
- Friendly and caring customer service
- Superior engineering and field sales support

CONTACT US

Parts and Warranty

Direct: (406) 532-6321

Email: service@spectrumproducts.com

Sales

Direct: (800) 791-8056

Email: info@spectrumproducts.com

PHONE 800.791.8056 | FAX 800.791.8057
7100 SPECTRUM LANE, MISSOULA, MONTANA 59808

RECREATIONAL PRODUCTS..... 4
Basketball Hoops 5
Pool Climbing Walls 7
Poolside Slides 12

COMPETITIVE POOL EQUIPMENT 22
Backstroke Flags & Posts 22
Dive Stands & Diving Boards 24
Racing Lane Lines & Storage 27
Starting Platforms & Backstroke Start Devices 30
Water Polo Goals 40

LIFEGUARD CHAIRS..... 42
Permanent..... 43
Movable 44
Guard Chair Accessories..... 45

POOL COVERS & STORAGE 46
Thermal Covers 47
Cover Storage Systems 49

POOL LIFTS & ASSISTED ACCESS 51
Battery Powered 52
Water Powered 58
Anchors 60
Parts & Accessories 61
Quick Reference Guide 62

RAILS & LADDERS 63
Grab & Stair Rails..... 64
Custom Rails..... 66
Ladders & Steps..... 67
Solarian 68

SPECTRA CLEAN®, FILTRATION & CLEANING SYSTEMS 69
Portable Filtration Systems 69
Spectra-Clean® 71

ANCHORS & PARTS..... 72

ABOUT, TERMS, WARRANTY, Q&A..... 74



**Basketball Hoops
Climbing Walls
Poolside Slides**



BASKETBALL HOOPS

Water basketball is a fun and engaging way to encourage your customers to spend more time at your pool and play solo or with teams. We have several models to fit different levels of recreation.

All of our basketball hoops can be customized to mount directly to the deck if necessary. Clear backboards are standard, but there are customized heavy duty Bison backboards available. Your poolside basketball hoop can also be mounted to concrete pylons, walls, or anything your facility needs to maximize space and play.

The Jamma! and Slamma! basketball hoops are available with up to 10' rim height and offer various setback levels to provide you with the right poolside basketball hoop for your facility. All of the frames are constructed of 304L Stainless Steel to minimize corrosion and provide you with a poolside feature that will last for years to come.



JAMMA JR!

2.5' Square frame
42" Rim height
Powder coated black
18" Standard setback
2.5" x 6" Square anchor

193400 - JAMMA JR!

193401 - 6" ANCHOR 316L STAINLESS STEEL - SOLD SEPARATELY



JAMMA JR! EXTENDED REACH

2.5' Square frame
42" Rim height
Powder coated black
30" Extended reach setback
2.5" x 6" Square anchor

2010523 - JAMMA JR! EXTENDED REACH

193401 - 6" ANCHOR 316L STAINLESS STEEL - SOLD SEPARATELY



JAMMA!

4' Square frame
6' Rim height
Bison heavy duty backboard
Customized setback
4" x 36" Square anchor

173420 - JAMMA! 304L STAINLESS STEEL

173421 - JAMMA! 316L STAINLESS STEEL

58782 - 304L STAINLESS STEEL ANCHOR - SOLD SEPARATELY

171060 - 316L STAINLESS STEEL ANCHOR - SOLD SEPARATELY

BASKETBALL HOOPS



SLAMMA!

4' Square frame
6' - 10' Adjustable rim height
Adjustable hoop
29" Maximum setback
J-Bolt anchor

133058 - SLAMMA!

143094 - J-BOLT ANCHOR - SOLD SEPARATELY



DUAL POST BASKETBALL HOOP

47.63" x 31.63" Rectangular frame
47.75" Rim height
24" Standard setback
1.9" x 6" Anchor (x2)

57827 - DUAL POST BASKETBALL HOOP

24060 - STAINLESS STEEL ANCHOR (REQUIRES 2) - SOLD SEPARATELY

27042 - REPLACEMENT BACKBOARD & RIM

POOL CLIMBING WALLS

What's more fun than the challenge of pushing yourself to climb to the top of a wall? The rewarding splash back into the pool! Our comprehensive line of pool climbing walls were developed by experts in the climbing industry and aquatic professionals.

Each wall is designed to withstand the harshest of indoor and outdoor aquatic settings. Pool climbing walls attract visitors of all ages and athletic abilities. From helping kids build self-esteem, to adult strength training, pool climbing walls expand poolside programming and require little maintenance.

Choose climbable surface heights from 8' - 16'. Available in clear or translucent blue or green wall panels.

Depth requirements vary by state, so be sure to check your local, city, and state requirements.

POOL CLIMBING WALLS



Kersplash™ Challenger

Kersplash Challenger pool climbing walls add sleek design elements and fun for all ages in both indoor and outdoor applications. Available in 2, 3, and 4 panel heights, they are modular to fit any space and deck configuration. The Kersplash Challenger pool climbing wall is constructed of a powder-coated stainless steel frame and UV and chlorine resistant panels. The see-through panels eliminate any visual barrier on the deck and hold an attractive visual appeal and fun to any pool setting. Translucent blue or green panels are also available.

Features:

- 8-, 12-, or 16-foot climbing height
- Designed to last in harsh indoor and outdoor aquatic settings
- Powder-coated stainless steel frame
- Modular, scalable design
- Easy installation
- Custom logos and powder-coating options available

Requirements

- 35" x 48" or 51" x 48" deck footprint based on wall height
- 5' - 9' pool recommended pool depth based on wall height
- 4' clearance behind the wall for a walkway
- 5' clearance to either side of the wall
- 10' drop zone
- Pool depth determines the allowable climbing height

POOL CLIMBING WALLS



"The new addition of the Kersplash Challenger climbing wall is an incredible asset to our facility. It provides an opportunity for something fun and exciting to do at the Chimney Park Pool. It'll shake things up this is summer! This is something brand new for our swimmers, not the same old stuff we've been providing since 1986. Kersplash Challenger is a huge modern feature that will excite swimmers this summer."

Kendra Martin - Operations and Facilities Manager, Town of Windsor

- 2210999 - 8-FOOT KERSPLASH CHALLENGER CLIMBING WALL**
- 2210888 - 12-FOOT KERSPLASH CHALLENGER CLIMBING WALL**
- 2210777 - 16-FOOT KERSPLASH CHALLENGER CLIMBING WALL**



POOL CLIMBING WALLS



Kersplash pool climbing walls add adventure to pool decks in both indoor and outdoor applications. Available in 2, 3, and 4 panel heights, they are modular to fit any space and deck configuration. The Kersplash pool climbing wall is constructed of a 100% stainless steel frame and UV and chlorine resistant panels. The see-through panels eliminate any visual barrier on the deck and hold an attractive visual appeal and fun to any aquatic setting.

Features:

- Designed to last in harsh indoor and outdoor aquatic settings
- All stainless steel is passivated and coated with Spectra-Shield to resist corrosion
- Frame is constructed of 100% USA made stainless steel
- Each section comes in a sturdy single frame with solid one piece construction
- Easy installation

Requirements

- 35" of deck space
- 4' of clearance behind the wall for a walkway
- 5" to either side of the wall
- 10' drop zone
- Pool depth determines the allowable climbing height

Height	Description	Part Number
8'	2 clear panels	70535
8'	2 blue panels	70535-1WB
8'	2 green panels	70535-1WG
8'	2 alternating panels - blue/green	70535-1WA
12'	3 clear panels	70536
12'	3 clear panels with removable base	160552
12'	3 blue panels	70536-1WB
12'	3 green panels	70536-1WG
12'	3 alternating panels - blue/green	70536-1WA
16'	4 clear panels	70537
16'	4 blue panels	70537-1WB
16'	4 green panels	70537-1WG
16'	4 alternating panels - blue/green	70537-1WA

POOL CLIMBING WALLS



Kersplash climbing walls are now available in clear see-through panels, and translucent blue and green panels!
Get a custom look at your facility by configuring the Kersplash Kolor panels in a fun checkerboard pattern, alternating columns, or all clear, blue or green panels.



POOLSIDE SLIDES



POOLSIDE SLIDES

Make a splash with high quality, commercial grade poolside slides - fun for all ages! Spectrum Aquatics' poolside slides are available in a wide array of configurations and colors. Safety and rider experience are our top priority. These slides boast slip-resistant steps and decking, plus a variety of twists and turns to accommodate all facilities. Colorful and highly visible, poolside slides will give your pool a fresh look that will last for years to come.

Features & Benefits:

- Powder-coated steel frame
- Custom colors available to match any pool environment
- Non-slip surface on steps and deck
- Bell and socket flumes - no leaks
- Modular to fit all deck configurations
- Buildable for future flume additions



STANDARD COLOR OPTIONS:



POOLSIDE SLIDES

SINGLE FLUME



Single flume triangle deck poolside slide features a single 360 ° enclosed slide flume, a triangle deck, and center steps with rails. The slide flume is fabricated from rotationally molded UV stabilized color impregnated LDPE. Custom colors are available.

Features:

- Platform height is 8'
- Flume length is 11.5'
- Deck width of slide is 13'
- Slip-resistant platform for safety
- 260 lb weight limit
- Installation available for an additional fee
- 3-year warranty when installed by a factory authorized installer
- Poolside slide structures are made to order

1810371 - SINGLE FLUME 360 ° TRIANGLE DECK



Single flume triangle deck poolside slide features a single 90 ° enclosed slide flume, a triangle deck, and center steps with rails. The slide flume is fabricated from rotationally molded UV stabilized color impregnated LDPE. Custom colors are available.

Features:

- Platform height is 8'
- Flume length is 14.5'
- Deck width of slide is 19.75'
- Slip-resistant platform for safety
- 260 lb weight limit
- Installation available for an additional fee
- 3-year warranty when installed by a factory authorized installer
- Poolside slide structures are made to order

1810547 - SINGLE FLUME 90 ° TRIANGLE DECK

POOLSIDE SLIDES

DOUBLE FLUME

Features:

- Flumes are fabricated from rotationally molded UV stabilized color impregnated LDPE
- Custom colors are available
- Slip-resistant platform for safety
- Installation available for an additional fee
- 3-year warranty when installed by a factory authorized installer
- Poolside structures are made to order



Double flume half hex deck poolside slide features two 90° enclosed slide flumes, a half hex deck, and center steps with rails.

Features:

- Platform height is 8'
- Deck width of flumes is 35.75'
- 260 lb weight limit
- Slide curve: twist

1810555 - DOUBLE FLUME-90°/90° - HALF HEX DECK



Double flume half hex deck poolside slide features one 360° and one 90° enclosed slide flume, a half hex deck, and center steps with rails.

Features:

- Platform height is 8'
- Deck width of flumes is 24' 2"
- 260 lb weight limit

1810549 - DOUBLE FLUME-90°/360° - HALF HEX DECK



Double flume triangle deck poolside slide features one 360° and one 90° enclosed slide flume, a triangle deck, and center steps with rails.

Features:

- Platform height is 8'
- Deck width of flumes is 22.5'
- 260 lb weight limit

1810548 - DOUBLE FLUME-90°/360° - TRIANGLE DECK

POOLSIDE SLIDES

DOUBLE FLUME



Double flume half hex deck poolside slide features two 360 ° enclosed slide flumes, half hex deck, and center steps with rails.

Features:

- Platform height is 8'
- Deck width of flumes is 15'
- 260 lb weight limit

1810373 - DOUBLE FLUME- 360°/360° - HALF HEX DECK



Double flume dual triangle deck poolside slide features one 180 °and one 540° enclosed slide flume, two triangle deluxe decks, and center steps with rails.

Features:

- Platform height is 8'
- Deck width of flumes is 20.75'
- 260 lb weight limit

1810557 - DOUBLE FLUME- 180°/540° - DUAL TRIANGLE DECK

POOLSIDE SLIDES

QUAD FLUME



Quad flume half hex deck poolside slide features two 90 °and two 360° enclosed slide flumes, half hex deck, and center steps with rails.

Features:

- Platform height is 8'
- Deck width of flumes is 33.75'
- 260 lb weight limit

1810552 - QUAD FLUME- 90°/360° - HALF HEX DECK



Quad flume half hex deck poolside slide features four enclosed slide flumes with varying degrees of turns, half hex deck, and center steps with rails.

Features:

- Platform height is 8'
- Deck width of flumes is 47'
- 260 lb weight limit

1810556 - QUAD FLUME- SUPREME HALF HEX DECK

POOLSIDE SLIDES - SLIDEWORX SERIES

Make a splash with high quality, commercial grade poolside slides - fun for all ages! Spectrum Aquatics' SlideWorx series poolside slides, powered by AquaWorx are available in a wide array of configurations and colors. Safety and rider experience are our top priority.

Features & Benefits:

- Galvanized steel or powder-coated steel frame
- Custom colors available to match any pool environment
- Fiberglass flumes
- Meets or exceeds ASTM slope velocity standards
- 400 gpm variable flow
- Variable speed pump included
- Average 2- 3 day installation



Flume Color Options:



POOLSIDE SLIDES - SLIDEWORX SERIES

SINGLE ENCLOSED FLUME



Single-rider enclosed flume slide is perfect for thrill seekers of all ages. Designed with adults and teens in mind, it makes a great addition to any pool.

Features:

- Elevation: 8' 2"
- Linear footage: 45' 1"
- 300 lb weight limit
- 48" height requirement



Single-rider enclosed flume slide is perfect for thrill seekers of all ages. Designed with adults and teens in mind, it makes a great addition to any pool.

Features:

- Elevation: 7' 7"
- Linear footage: 39' 9"
- 300 lb weight limit
- 48" height requirement

POOLSIDE SLIDES - SLIDEWORX SERIES

SINGLE OPEN FLUME



The lower elevation of this slide makes it less intimidating for younger guests who want to experience the thrill of an open flume slide.

Features:

- Elevation: 7' 0"
- Linear footage: 46' 0"
- 300 lb weight limit



Single-rider enclosed flume slide is perfect for thrill seekers of all ages. Designed with adults and teens in mind, it makes a great addition to any pool.

Features:

- Elevation: 9' 4"
- Linear footage: 67' 6"
- 300 lb weight limit
- 48" height requirement

POOLSIDE SLIDES - SLIDEWORX SERIES

SINGLE OPEN FLUME & COMBINATION



Ideal for toddlers and younger children, the unique design makes for a less intimidating slide experience with bumps that help reduce accelerating speeds. This slide is intended for installation in the shallow waters of zero-entry and kiddie pools.

Features:

- Elevation: 4' 1"
- Linear footage: 13' 7"
- 300 lb weight limit



Double the fun and combine open and closed flume slides on one single structure. Separate platforms for each slide allow operations to run smoothly when wait lines inevitably begin.

Features:

- Open flume elevation: 9' 4"
- Closed flume elevation: 6' 5"
- Open flume linear footage: 67' 10"
- Closed flume linear footage: 17' 1"
- 300 lb weight limit
- 48" height requirement

BACKSTROKE FLAGS & POSTS

BACKSTROKE FLAGS



COMPETITOR BACKSTROKE FLAGS

- Oxford nylon material
- Variety of colors available
- Custom logos available
- Meets all World Aquatics, NCAA, USA, and NFHS regulations
- Available in two sizes: 11" x 14.5" or 12" x 18"
- Easy mounting options



KIEFER BACKSTROKE FLAGS

- Nylon or vinyl material
- Variety of colors available
- Custom logos available
- Meets all World Aquatics, NCAA, USA, and NFHS regulations
- No hardware or assembly required



BACKSTROKE FLAGS & POSTS



BACKSTROKE/RECALL POSTS

Designed to support backstroke lines, finish lines, recall lines, volleyball nets and splash curtains. Flags not included.

- 2" top ring for connection to backstroke flags or recall ropes
- Optional sliding collar available
- Anchors not included
- Round or square posts available in heights of 4'6" or 8'

4'6" STANCHIONS

RECALL STANCHION (P/N 23624)
 STANCHION - 1.90 X .109 304L (P/N 23622)
 STANCHION - 1.90 X .145 316L (P/N 134034-54-145)
 STANCHION - 1.90 X .109 316L (P/N 134034-54-109)
 1.90" O.D. SLIDING RING (P/N 23625)

8' STANCHIONS

BACKSTROKE STANCHION (P/N 23614)
 STANCHION - 1.90 X .109 304L (P/N 23612)
 STANCHION - 1.90 X .109 316L (P/N 134034-96-109)
 STANCHION - 1.90 X .145 316L (P/N 134034-96-145)
 STANCHION - SQUARE 304L - 2.5" X .180" WALL (P/N 2010525)
 STANCHION - SQUARE 316L - 2.5" X .180" WALL (P/N 2010979)
 1.90" O.D. SLIDING RING (P/N 23625)
 2.50" SQUARE SLIDING COLLAR (P/N 2010527)

TAGLINE STANCHION POSTS TO SPAN 50M+

STANCHION - TAGLINE - 1.90 X .145 304L (P/N 2010526) INCLUDES PULLEY
 STANCHION - TAGLINE - 1.90 X .145 316L (P/N 2010607) INCLUDES PULLEY & WINCH PLATE



TOT DOCK TRAINING PLATFORM

This training platform is an excellent teaching aid which helps beginning swimmers feel at ease and secure during lessons by decreasing water depth and offering grab rails.

- Freestanding and easily placed into the shallow area of the pool
- 300 lb weight limit
- Adjustable, weighted legs
- Stainless steel frame
- 42" x 60" non-slip platform made of UV stabilized structural fiberglass
- Multiple units can be configured together
- Includes protective rubber bumpers

82300 - TOT DOCK

DIVE STANDS

CHEYENNE DIVE STANDS



CHEYENNE DIVE STANDS

The Cheyenne meets all competitive diving regulations and is designed for use with in-ground swimming pools. Fabricated from 304L stainless steel with an exclusive passivation process to ensure maximum corrosion resistance. Ladders are included. Custom fabrication is available for any application. * **3M Photo shown with optional stair case.**

- Conforms to NSPI standards for diving portions of Class B and C swimming pools
- Rear or side access available; customize with staircase
- Accepts all manufactured diving boards in lengths of 10' to 16'
- 26" sloping treads with integral non-slip surface and UV inhibitors
- All main support columns are flanged for ease of installation
- Foot adjustable fulcrum and hinged diving board assembly included

22121 - 1M CHEYENNE DIVE STAND (REAR ACCESS)

22123 - 1M CHEYENNE DIVE STAND (SIDE ACCESS)

22140 - ANCHOR KIT (REAR ACCESS)

22160 - ANCHOR KIT (SIDE ACCESS)

22131 - 3M CHEYENNE DIVE STAND (REAR ACCESS)

22133 - 3M CHEYENNE DIVE STAND (SIDE ACCESS)

22150 - ANCHOR KIT (REAR ACCESS)

22170 - ANCHOR KIT (SIDE ACCESS)



DIVE STANDS



DURAFIRM 1M STAND

This 1M DuraFirm stand is supplied with top and intermediate handrails on both sides.

- 22030 - DURAFIRM 1M STAND (RAILS BOTH SIDES)**
- 22020 - DURAFIRM 1M ANCHOR SET (SET OF 8)**



DURAFIRM 3M STAND

The 3M diving stand consists of heavy aluminum castings with roller and tracks that are anodized, heat-treated, extruded aluminum.

- 22010 - DURAFIRM 3M DURAFIRM STAND (RAILS BOTH SIDES)**
- 22020 - DURAFIRM 3M ANCHOR (SET OF 8)**



DURAFIRM SHORT STAND

Designed for use on concrete pedestals or platforms.

- 22060 - DURAFIRM SHORT STAND (RAILS BOTH SIDES)**
- 22090 - DURAFIRM SHORT STAND (NO RAILS)**
- 22100 - DECK ANCHORS (SET OF 6)**

1/2, 3/4, 1M SHORT STAND - FIXED FULCRUM

- 47061 - 1/2, 3/4, 1M SHORT DIVE STAND (REAR ACCESS)**
- 47061 - 1/2, 3/4, 1M SHORT DIVE STAND (SIDE ACCESS)**
- 19177 - SHALLOW ANCHOR FOR DIVE STAND**

DIVING BOARDS



RECREATIONAL ALUMINUM DIVING BOARDS

Proven I-beam extrusions are epoxy glued with welded end construction. The non-slip surface resists wear. Each board comes with mounting hardware. Choose from marine blue, tile blue or radiant white finish.

22400 - 10' ALUMINUM BOARD

22410 - 12' ALUMINUM BOARD

22420 - 14' ALUMINUM BOARD

22430 - 16' ALUMINUM BOARD



COMMERCIAL FIBERGLASS DIVING BOARDS

This heavy-duty, commercial diving board features a solid horizontally laminated wood core completely encased in fiberglass. Each board has a slip-resistant top tread and is tapered for superior performance. Stainless steel hardware kit included. Contact us for current product offering.

DURAFLEX DIVING BOARDS



High-quality springboard diving equipment is the standard in the diving industry. Duraflex boards are made of single piece ribbed extruded aluminum alloy with a top surface coated in aqua-colored, thermal-curing epoxy resin. The board is finished with a laminate of flint silica and alumina, between coats of epoxy to provide a slip-resistant surface.

- Heat treated for superior yield strength of 50,000 psi
- Slip-resistant surface

DURAFLEX ALUMINUM BOARD

This board is ideal for recreational diving in commercial pools.

22210 - 14' DURAFLEX

22220 - 16' DURAFLEX



MAXIFLEX "B" BOARDS

This board is seen in most major competitive diving events in the world. The Maxi-B is slightly lighter in weight and is said to give a quicker action in the hurdle step. The double-tapered design allows the whole board to arc while flexing, giving it approximately 15% more lift than the standard Duraflex.

- Used in most major diving competitions in the world
- Lighter weight
- Provides quicker action in hurdle step
- Double-taper design offers superior lift

22240 - 16' MAXIFLEX B

**PLEASE NOTE: All pools must meet minimum standards for installation.*

RACING LANE LINES

Designed to deflect wave motions downward through hydrodynamic propulsion for wake-free competitive swimming. Durable, injection-molded polyethylene discs with built-in UV and chemical resistors. Ships assembled and complete with an "S" hook on one end and a Supertensioner™ on the other. All hardware is made of stainless steel and plastic. Water polo boundary and goal tethers available.



ANTIWAVE FORERUNNER LANE LINE

STANDARD COLORS

SPECIALTY COLORS

CUSTOM COLORS



ANTIWAVE

4.75" FORERUNNER LANE LINES:

55810 - 60 FT LINE	55820 - 25M LINE	55830 - 50M LINE WITH 1 DISCONNECT	55840 - CUSTOM LENGTH BY FOOT
55815 - 75 FT LINE	55825 - 50M LINE	55835 - 50M LINE WITH 2 DISCONNECTS	

6" MAXIMUM LANE LINES:

58850 - 60 FT LINE	55870 - 50M LINE WITH 1 DISCONNECT	55880 - CUSTOM LENGTH BY FOOT
55855 - 75 FT LINE	55875 - 50M LINE WITH 2 DISCONNECTS	
55860 - 25M LINE	55880 - CUSTOM LENGTH BY FOOT	
55865 - 50M LINE	55845 - SUPERTENSIONER BY FOOT	

Patented flow-through design controls water turbulence by allowing wave energy to be dispersed along the length of the lane. Consists of a series of polyethylene disks and donuts that rotate independently, allowing wave energy to be absorbed and dispersed within the channel of the lane, optimizing conditions for training and competition. Ships fully assembled.



COMPETITOR

4" COMPETITOR LANE LINES:

55020 - 60' LANE	55040 - 75' LANE	55060 - 25M LANE	55080 - 50M LANE	55100 - 25M DISC TO 1-75' LANE	55120 - 50M DISC TO 2-75' LANES	55140 - 50M DISC TO 1-75' LANE	55160 - 50M DISC TO 1-75' LANE AND 1-25M LANE	55170 - 4" CUSTOM LANE LINES (PER FOOT)	55180 - HARDWARE KIT FOR CUSTOM LINES
------------------	------------------	------------------	------------------	--------------------------------	---------------------------------	--------------------------------	---	---	---------------------------------------

6" GOLD MEDAL LANE LINES:

55220 - 60' LANE	55240 - 75' LANE	55260 - 25M LANE	55280 - 50M LANE	55300 - 50M TO 1-75' LANE	55320 - 50M TO 2-75' LANE	55360 - 50M DISC TO 1-75' LANE AND 1-25M	55290 - 6" CUSTOM LANE LINES (PER FOOT)
------------------	------------------	------------------	------------------	---------------------------	---------------------------	--	---

Vegas Gold 871C	Green 340C	Sky Blue 542C	Blue 3005U	Navy 648C
Purple Violet U	Gray 424C	White	Black Black C	Red 186C
Burgundy 7643C	Orange 021	Yellow 108C	Maroon 7622C	



173419 - EXTENSION HOOK
*Variety of lengths available

LANE LINE STORAGE

SHERIDAN LANE LINE STORAGE REEL



Unique stainless steel construction with locking casters.

- 304L stainless steel construction
- Passivated for maximum corrosion resistance
- Capacity: 720' of 4" line or 400' of 6" line
- 4" caster wheels with locking brakes
- 6' 5" 7/8" (L) x 5' 5/64" (W) x 5' 6 11/16" (H)

55525 - SHERIDAN STORAGE REEL

55552 - SHERIDAN REEL COVER

COMPETITOR LANE LINE STORAGE REELS



ELITE STOR-LANE REEL™

High capacity lane line reel.

- Powder-coated aluminum frame and end-wheels
- 6-inch stainless steel casters with individual brakes
- Capacity: 902' for 4" lanes and 492' for 6" lanes
- 83" x 60" x 71"
- Cover available



CLASSIC PLUS STOR-LANE REEL™

- Powder-coated aluminum frame and end-wheels
- 5-inch stainless steel casters with individual brakes
- Capacity: 525' for 4" lanes and 300' for 6" lanes
- 70" x 46" x 58"
- Cover available



CLASSIC STOR-LANE REEL™

- Powder-coated aluminum frame and molded end-wheels
- 5-inch polymer and rubber wheels with individual brakes
- Capacity: 525' for 4" lanes and 300' for 6" lanes
- 70" x 46" x 58"
- Cover available

LANE LINE STORAGE

ANTI-WAVE LANE LINE STORAGE REELS



ULTIMATE STORAGE REEL

- Powder-coated white aluminum frame
- All four wheels independently lock and rotate
- Forerunner 4.75" lane capacity: (9) 60' lanes, or (8) 75' lanes, or (7) 25M lanes, or (3) 50M lanes - total of 492 linear feet up to 540 linear feet
- 6" lane capacity: (6) 60' lanes, or (5) 75' lanes, or (4) 25M lanes, or (2) 50M lanes - total of 328 linear feet up to 360 linear feet
- 72" x 90" x 48"
- Cover available



SWIM LANE CADDY

- Provides safe and quick removal and installation
- Hooks over the pool edge to enable easy removal of lanes
- Fiberglass construction
- Capacity of one AntiWave lane at a time

LANE LINE TRAPS



IN-DECK STORAGE

The in-deck Lane Line Traps clear deck space by providing lane line storage below deck.

- Easy to use
- Fixed rollers allow the lane line to slide in easy
- Nylon basket below deck catches and stores the lane line
- Nylon basket is collapsible and can be compressed up and out of the way
- Measures 36" x 45" when fully extended and hangs 14" below deck

1810494 - LANE LINE TRAP - HATCH

1910445 - LANE LINE TRAP - RING & BASKET ASSEMBLY





STRENGTH. EXPERIENCE. FORM.

What makes the best athletes also makes the best starting platforms.

Launching Innovation Since 1972

Spectrum Aquatics offers both single and dual post starting platforms, which include incredible non-slip tops and steps. Our stainless steel block tops are coated with a grit overlay providing a level of traction not available in competing products.

Our plastic tops are made of low density polyethylene and contain a non-slip surface that surpasses industry standards. Plastic tops are a great choice for facilities that remove and store the platforms frequently - durable and able to withstand harsh pool environments - resisting discoloration, fading and cracking.

- Unlimited color and logo options available on Xcellerator®, Record Breaker and Fusion Starting Platforms
- All starting platforms can be customized to fit virtually any existing anchor
- Powder Coating available in any color and a variety of finishes
- Electropolished and Spectra Shield® coated stainless steel provides high-quality finish that resists corrosion
- Easy to install and remove
- 18" wide competition-width H Style backstroke bar or 18" U-bar on dual post models
- Front hand and toe grips for faster takeoffs
- Easy-to-read lane numbers visible from all four sides
- Anchors and covers sold separately
- Our starting platforms comply with World Aquatics, USA Swimming, NCAA and NFHS regulations (excluding the Quicksilver)

STARTING PLATFORM CUSTOMIZATION

ANCHORS AND BASES

To best suit your needs, we offer a wide variety of custom anchors and bases to fit into any existing anchors or unique pool gutter configurations.



POWDER COATING AND CUSTOM LOGOS

Custom powder coating is available for all Spectrum starting platforms. Custom logos available for Xcellerator, Record Breaker, and Fusion Starting Platforms.



SINGLE POST STARTING PLATFORMS

XCELLERATOR



XCELLERATOR - SINGLE POST



XCELLERATOR - SINGLE SQUARE POST

Applying the latest in approved technology, this starting platform gives swimmers an extra boost on starts by allowing the rear leg to start at a 90° angle and the swimmer's center of gravity to move forward when using the side rails.

- Large 24" x 32" stainless steel top sloped at a 10° angle for optimal starting stances
- Extra large 8" x 16" step for easy mount
- Easy-to-adjust track start footrest with 11 location setting options to accommodate all heights and levels of flexibility
- Uses single post anchor with patented anti-wobble design allowing for easy removal
- Side handles included to enhance speed and faster takeoffs
- Backstroke handles with versatile 18" H-bar
- Suggested setback of 30" – accommodates anchor setbacks of 18" to 36"
- Standard surface color is black or white, with custom colors, powder coat, and logo options available (logos can be placed on platform top, wedge and/or step)

57282 - XCELLERATOR SINGLE POST

FUSION

- Built-in Colorado Time Systems® Relay Judging Platform (RJP) to calculate reaction time and relay exchanges
 - Speedlights across the front of the RJP and step-side flash simultaneously with starting system horn and strobe light
 - Lights provide an additional signal to athletes who are deaf or hard of hearing
 - Easy, out-of-the-way plug-ins for RJP touchpad, speedlights, lane speaker and back-up buttons
- Uses single post anchor with patented anti-wobble, design allowing for easy removal
- 24" x 32" non-slip surface platform top for extra-fast starts
- Includes practice top so the RJP can be stored away from the pool when not in use
- Side handles to enhance speed and faster takeoffs
- Backstroke handles with versatile 18" H-bar
- Suggested setback of 30" – accommodates anchor setbacks of 18" to 36"
- Available in gray, with custom colors and logo options available



FUSION - SINGLE POST

57291 - FUSION SINGLE POST

SINGLE POST STARTING PLATFORMS

RECORD BREAKER



RECORD BREAKER - SINGLE POST



RECORD BREAKER - SINGLE SQUARE POST

- Large 24" x 32" stainless steel top sloped at a 10° angle for optimal starting stances
- Extra large 8" x 16" step for easy mount
- Easily upgradeable to Xcellerator with addition of side handles & track start footrest
- Uses single post anchor with patented anti-wobble design allowing for easy removal
- Non-slip access step, available on side or rear
- Large side step accommodates anchor setbacks of 18" to 36"
- Rear step accommodates anchor setbacks of 30" to 36"
- Backstroke handles with versatile 18" H-bar
- Standard surface color is black or white, with custom colors, powder coat, and logo options available

57283 - RECORD BREAKER - SINGLE POST

GROWLER



The Growler is great for all levels of competition and features the largest top in the industry.

- Large 25" x 32" single piece LDPE platform with molded-in, non-slip surface; no exposed bolts or hardware
- Front hand and toe grip for faster takeoffs
- 8" x 10" access step with molded-in, non-slip surface. Available on side or rear
- Accommodates anchor setbacks of 18" to 36"
- Side step accommodates anchor setbacks of 18" to 36"
- Rear step accommodates anchor setbacks of 30" to 36"
- Backstroke handles with versatile 18" H-bar

21653 - GROWLER - SIDE STEP

21657 - GROWLER - REAR STEP

SINGLE POST STARTING PLATFORMS

GRIZZLY

Another one of Spectrum's popular starting platforms. Great for all levels of competition.

- 23" x 25" single piece LDPE platform with molded-in, non-slip surface; no exposed bolts or hardware
- Front hand and toe grip for faster takeoffs
- 8" x 10" LDPE side or rear access step with molded-in, non-slip surface
- Accommodates anchor setbacks of 18" to 30"
- Side step accommodates anchor setbacks of 18" to 30"
- Rear step accommodates anchor setbacks of 24" to 30"
- Backstroke handles with versatile 18" H-bar

21654 - GRIZZLY - SIDE STEP

21655 - GRIZZLY - REAR STEP



QUICKSILVER

Ideal for beginners and pools with large water drafts.

- 23" x 25" LDPE platform with molded-in, non-slip surface; no exposed bolts or hardware
- Front hand and toe grip for faster takeoffs
- Horizontal backstroke bar
- Stainless steel construction
- Suggested setback of 20" – accommodates setbacks of 12" to 24"
- Does NOT meet World Aquatics, USA Swimming, NCAA or NFHS regulations

57289 - QUICKSILVER SINGLE POST



Available in five colors:



LDPE Standard Top Colors



HOW IT WORKS



DUAL EXPANSION POST STARTING PLATFORMS

Saline High School

Saline, Michigan

Eliminates Dual Post Anchor "Wobble"

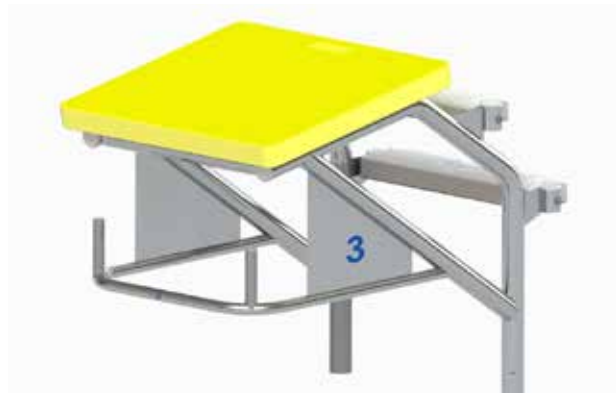
Easy to Install into EXISTING or NEW DUAL POST ANCHORS (also available in square single post).

Platform Legs Expand into anchors - no need to rely on the longevity of small anchor wedge parts to tighten around the block legs.

Ask about our dual post expansion anchor plugs



DUAL POST STARTING PLATFORMS



BIGHORN

- 23" x 25" non-slip surface with no exposed bolts or hardware
- 20" molded-in, non-slip surface step tread
- Standard Bighorn accommodates anchor setbacks of 20" to 30"
- Long Reach model accommodates an anchor setback up to 40"
- Backstroke handle with versatile 18" U-bar

21095 - BIGHORN

21115 - LONG REACH BIGHORN



COUGAR

- 25" x 32" non-slip surface with no exposed bolts or hardware
- 8" x 10" access step with molded-in, non-slip surface available in side or rear
- Side step accommodates anchor setbacks of 18" to 40"
- Rear step accommodates anchor setbacks of 30" to 40"
- Backstroke handle with versatile 18" U-bar

21135 - COUGAR - SIDE STEP

21145 - COUGAR - REAR STEP



XCELLERATOR

- Large 24" x 32" stainless steel non-slip top sloped at a 10° angle for optimal starting stances
- Extra large 8" x 16" step for easy mount
- Adjustable track start footrest attachment with 11 locations setting options
- Side handles and 18" backstroke U-Bar included to enhance speed and quick takeoffs
- Non-slip side access step available
- Suggested setback of 30" – accommodates anchor setbacks of 18" to 36"
- Comes standard black or white top, custom colors and logo options available

133171 - XCELLERATOR DUAL POST



RECORD BREAKER

- Large 24" x 32" stainless steel non-slip top sloped at a 10° angle for optimal starting stances
- Extra large 8" x 16" step for easy mount
- Easily upgradeable to Xcellerator with addition of side handles & track start footrest
- Non-slip access step, available on side or rear
- Side step accommodates anchor setbacks of 18" to 36"
- Rear step accommodates anchor setbacks of 30" to 36"
- Backstroke handles with versatile 18" U-bar
- Comes standard black or white top, custom colors and logo options available

57741 - RECORD BREAKER DUAL POST

STARTING PLATFORM ANCHORS

SINGLE POST ANCHOR

This unique, patented anti-wobble and locator pin design is superior to all other single-set type anchors. There is no equal.

- No tools required when inserting or removing starting platform
- Machined bronze anchor body ensures extremely tight tolerances & offers superior corrosion resistance
- Locating slot design eliminates rotation and guarantees proper alignment of platform
- Includes stainless steel lid and removal tool
- Optional anchor set tool available
- Bulkhead customization available



21705 - ANCHOR SET TOOL



21700 - SINGLE POST ANCHOR

42057 - BULKHEAD ANCHOR

DUAL POST ANCHOR

Designed for use with dual post starting platforms. Fabricated of 304L stainless steel. Welded fixture design allows for easy installation. Anchors are set exactly 20" center to center for ease of platform installation and removal. Anchors are provided with bonding lug, caps and removal key.

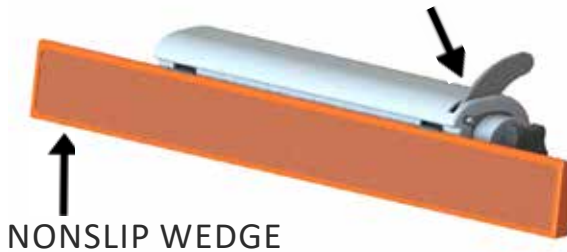
- 24070 - 6" DEEP DUAL POST ANCHOR SET
- 24071 - 10" DEEP DUAL POST ANCHOR SET



BACKSTROKE START DEVICES

Backstroke swimmers routinely risk a slip start when pushing off a pool wall or slippery touchpad. Our backstroke start devices are designed to reduce slipping, and are available in two different models: automatic retraction, and stationary.

AUTOMATIC RETRACTION 143081



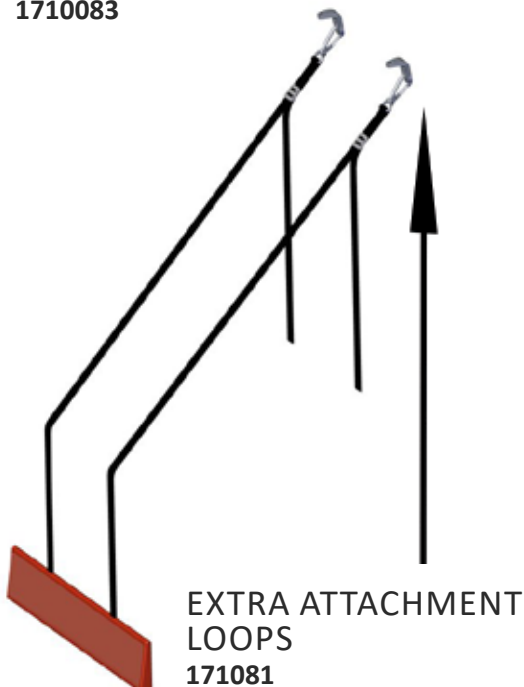
- U.S. Patent No. 10,245,524
- Features a 65cm x 8cm (25.6" x 3.1") nonslip wedge with a 10° angle to secure foot placement along pool wall
- Easily adjustable and locks into place, allowing swimmers to select desired location of the nonslip wedge along the pool wall
- Automatically retracts up and out of the water so as not to interfere with flip turns and touchpad interactions, eliminating the need for manual removal
- Compatible with nearly all block types and pool configurations - it can be strapped around a starting platform for easy set up
- Custom attachment options are also available
- Our sales team can help determine the best mounting option for your pool

HOW IT WORKS:



STATIONARY BACKSTROKE START WEDGE

1710083



The Stationary Backstroke Start Wedge allows swimmers to perfect their backstroke takeoffs at their local pool.

- Features a 65cm x 8cm (25.6" x 3.1") nonslip wedge with a 10° angle to secure foot placement along pool wall
- Same non-slip wedge and straps as our top-of-the-line Backstroke Start Device
- Can easily attach to nearly any existing starting block frame
- Includes stainless steel hardware to resist corrosion
- World Aquatics, USA Swimming and NCAA compliant, when installed correctly

If you are a highly competitive swimming club or university looking for a way to perfect backstroke starts with a wedge for the upcoming championship meets, the Stationary Backstroke Start Wedge is a must!

STARTING PLATFORM MAINTENANCE AND UPGRADES

COVERS

Starting Platform covers protect your investment by preventing unauthorized use of the platforms and shielding the platform surface from the elements when they are not use.

153174 - STARTING PLATFORM HARD COVER - WHITE

- Sturdy precision vacuum formed ABS plastic
- Includes elastic retaining strap and optional cable lock
- Universal fit covers all platforms up to 25" x 32" in size, with and without wedges
- UV protection
- Durable textured surface
- Easy stack = Easy storage



26315 - STARTING PLATFORM SOFT COVER

- UV rated polyethylene material with draw cord
- Universal fit covers all platforms up to 25" x 32" in size

MAINTENANCE

Cleaning your starting platforms on a regular basis is an essential part of ensuring longevity and minimizing rust formation on your starting platforms. Regimented cleanings will also reduce incidents of stains and discoloration on the block surface. The frequency in which platforms should be cleaned depends upon how harsh the environment is in your pool facility. Starting platforms can also look new again with our resurfacing for non-slip surfaces and powder coating. Contact us to learn more about this option.

UPGRADES

Many of our starting platforms can be upgraded to add the trackstart wedge and/or side rails to help your athletes start with confidence.



WATER POLO GOALS

GLOBAL ANTI GOAL

The Global Anti Goal by AntiWave is suitable for World Aquatics or equivalent level water polo events, as well as all levels of club competition and training facilities. This water polo goal blends cutting edge materials and production with innovative design, resulting in a lightweight, heavy duty, full-sized goal that meets the needs of all clubs and facilities.



Features:

- Custom marine grade powder-coated aluminum extrusions with HD Marine Nylon & SS316 fittings
- Foldable design for compact and safe poolside storage
- Thick external carry handles for safe transport
- Long-life HD polypropylene cord net, knotted at every intersection ensures long lifetime under hard use
- Easy to install Marine Nylon net clips ensure a solid connection between net and goal, as well as simple installation
- Custom 2-piece aluminum front frame cross section for maximum strength and lightest weight
- Includes lane anchor attachment points at the 750mm and 1080mm distances per pre- and post-2015 World Aquatics regulations
- Lightweight, heavy duty design and construction for years of reliable service
- Safe and easy 2-person pool deck movement
- Marine Nylon pool edge bumpers on rear of frame prevent chipping of pool tiles and gutters when installing and removing from the pool
- Durable oversized HD PE flotation elements rest on the pool concourse, ensuring no damage to pool edge and tiles, or scraping of the goal body during installation or removal
- Open corner net configuration reduces ball rebound
- HD polymer bows allow quick disconnect from top frame to rear of the goal when the goal is folded

WATER POLO GOALS



DAWSON WATER POLO GOAL

Adjustable deck mounted water polo goals meets World Aquatics, NCAA, NFSHSA and USA Water Polo regulations for both deep & shallow settings.

- Easy to install, remove and store with hinged mounting legs which fold flat for storage
- Protective rubber bumpers included
- 304L stainless steel – 316L available upon request
- Accommodates 7", 30" or 36" setback – custom setbacks available
- Cage supplied with UHMW fascia and reinforced black HTPP backdrop

84299 - DAWSON WATER POLO GOAL CAGE AND NET

84298 - REAR LEG SET FOR 7" SETBACK

84297 - REAR LEG SET FOR 30" SETBACK

84294 - REAR LEG SET FOR 36" SETBACK

23638 - 6" BRONZE ANCHOR (2 REQUIRED PER GOAL)



ODYSSEY POLO GOAL

The Odyssey floating goal has been used in pools around the world since its introduction at the 2000 Sydney Olympics.

- Made of durable white powder-coated aluminum or stainless steel
- Three heavy-duty, hand-laid fiberglass flotation panels are located on each side and in back to provide necessary buoyancy
- Net is made of tough polypropylene cord, knotted at every intersection
- Easy assembly by two people in one hour
- Conforms to all national and international specifications
- Dimensions: 152" W x 56" D x 42" H

84230 - ODYSSEY POLO GOAL



FLOATING POLO GOAL

Polo goals are ideal for competitive water polo at the regional or local level.

42613 - UNIVERSAL GOAL

42614 - SPLASHBALL GOAL

57436 - FLIP FLOAT GOAL



20110 4' MARSHALL



42022 36" MENDOTA



20160 6' DISCOVERY



40923 42" OBSERVATION STATION

LIFEGUARD CHAIRS

Spectrum Aquatics® offers a complete selection of portable and permanent lifeguard chairs. Chairs come in varying heights and widths to accommodate the safety requirements and needs of all indoor and outdoor commercial aquatic facilities.

Features:

- Non-slip footboards, platforms and ladder treads
- UV-protected guard seats
- Stainless steel components passivated and protected by Spectra Shield® to provide a uniform and highly corrosion-resistant finish
- Rescue tube holder and umbrella mounting brackets included
- Movable lifeguard chairs include wheels for ease of transport
- Tubing comes standard with 1.9" OD with .065" wall thickness and 304L for extra strength and stability
- 1.5" tubing type and 316L stainless steel available upon request

PERMANENT LIFEGUARD CHAIRS



HYALITE

This lifeguard chair was designed to conform to federal OSHA regulations, as mandated in some states. All guard rails are the compliant height and forward distance from the platform. Chair features a 360° swivel chair and a rear access ladder.

20065 - 6' HYALITE
20013 - HYALITE ANCHOR



STIMSON

The rugged Stimson is a space-saving lifeguard chair that features an angled ladder assembly for safety and comfort. The 360° swivel chair aids in active viewing.

57308 - 5' STIMSON; 1.90 X .065 | **57308-.083 - 5' STIMSON; 1.50 X .083 316L**
44116 - 6' STIMSON; 1.90 X .065 | **44116-.083 - 6' STIMSON; 1.50 X .083 316L**
20013-00 - STIMSON ANCHOR



SAPPHIRE

The space-saving Sapphire enables a minimal setback and is ideal for rollout gutter pools. It features a 360° swivel chair.

20085 - 6' SAPPHIRE
20021 - SAPPHIRE ANCHOR

MOVABLE LIFEGUARD CHAIRS



DISCOVERY

This lightweight, yet sturdy unit enables the lifeguard to oversee any area of the pool and features a 360° swivel chair. Optional Ballast System provides extra stability.

20140 - 5' DISCOVERY

20160 - 6' DISCOVERY

20170 - 8' DISCOVERY



TORREY II

The low profile Torrey II is readily movable and allows for a rapid exit while maintaining an excellent line of sight and features a 360° swivel chair.

20211 - 36" TORREY II

20214 - 42" TORREY II

20215 - 48" TORREY II



MARSHALL

The Marshall can be used for lifeguarding, judging, coaching or instructing. This lightweight platform is easy to transport. Optional Ballast System provides extra stability.

20110 - 4' MARSHALL

20100 - 6' MARSHALL



HILGARD

The versatile Hilgard provides multiple entrances, enabling two guards to be on the platform at the same time. Steel railing in back adds safety and a split rail in front offers an unobstructed view. Platform features extra-wide side mount ladders and a 360° swivel chair.

20121 - 5' HILGARD



OBSERVATION STATION

The Observation Station has a front entry and elevated viewing station. The wide front step brings the lifeguard closer to the pool edge. The chair is portable and has a 360° swivel to aid in active viewing.

40923 - 42" OBSERVATION STATION

MOVABLE LIFEGUARD CHAIRS



47710 - WHEEL KIT

MENDOTA

The Mendota is made of recycled high-density polyethylene material.

- Shipped with minimal assembly required (80% factory assembled)
- Resistant to corrosive substances, oil, insects, fungi, salt spray, rust and other environmental stresses
- 316L stainless steel hardware for maximum corrosion resistance
- Will not rot, splinter, or crack
- Does not absorb moisture
- Optional Ballast System provides extra stability
- Includes wheel kit and cup and umbrella holders

155525 - 30" MENDOTA

42022 - 36" MENDOTA

2010535 - 40" MENDOTA

45023 - 48" MENDOTA

47747 - 60" MENDOTA

2010545 - 66" MENDOTA

111419 - 72" MENDOTA

54481 - 60" DUAL STEP MENDOTA

2010555 - 66" DUAL STEP MENDOTA

11419-72 - 72" DUAL STEP MENDOTA

47736 - BALLAST TANK

47710 - WHEEL KIT

GUARD CHAIR ACCESSORIES



COMMON ACCESSORIES

29914 - FOLDING REPLACEMENT SEAT

77119 - QUICK CONNECT

24413 - 26" REPLACEMENT TREAD

24414 - 22" REPLACEMENT TREAD



GUARD CHAIR BALLAST TANK

Ballast System is designed to provide extra stability for guide chairs with easy attachment to existing portable chairs. Ideal for high-wind and heavy-use applications. Made of molded LDPE and equipped with top and side mounted fill and drain ports.

- Mounting hardware included
- Weighs approximately 185 lbs when filled with water

20148 - BALLAST FOR MARSHALL

20145 - BALLAST FOR DISCOVERY

20180 - BALLAST FOR MENDOTA



SWIMMING POOL COVERS

“Covering a pool when it is not in use is the single most effective means of reducing pool heating costs. Savings of 50% to 70% are possible.”

- U.S. Department of Energy

Swimming pools expend energy in a variety of ways, but evaporation is by far the largest source of energy loss. Replacing evaporated water (and then heating it) requires tremendous amounts of energy and money.

Covering a pool solves this problem. Pool cover systems eliminate excessive water consumption, unnecessary heating and above all, save money. These systems typically pay for themselves within the first year of use and often within the first six months.

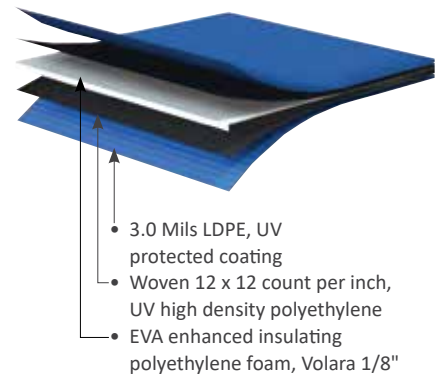
SWIMMING POOL COVERS



These superior, energy-saving covers outlast all others. Covers are made with a five-layer system to insulate and protect. The heavy duty material is UV protected and engineered to provide the most efficient energy saving system for your pool.

ENERGY SAVING POOL COVERS

- Easy to deploy and retrieve
- Available in 3, 5 and 6 year warranty
- Advanced performance – 100% UV stabilized polyester thread
- Longer life – coated and UV stabilized on both sides for maximum protection
- Superior strength edging – made with PVC coated tarpaulin – will not chalk or flake
- Extruded black vinyl incorporated into edging for weight
- Strategically located water vent holes with weighted edge help covers hold in windy environments
- Panels come complete with heavy-duty, UV inhibited loop ties for attaching the panels to a storage reel system
- Loop ties made of 5/16" heavy-duty synthetic fiber rope
- 304 stainless steel grommets for maximum corrosion resistance



- 183500-3 - CUSTOM EDGED POOL COVER; 3 YEAR WARRANTY**
- 183500-5 - CUSTOM EDGED POOL COVER; 5 YEAR PRO-RATED WARRANTY**
- 183500-6 - CUSTOM EDGED POOL COVER; 6 YEAR PRO-RATED WARRANTY**
- 183500-7 - CUSTOM WELDED EDGED POOL COVER; 7 YEAR PRO-RATED WARRANTY**
- 208200 - LOOP TIES**
- 50021 - 18" LEAD STRAP (FASTENS COVER TO WINDER)**
- 43002 - 15' LEAD STRAP**



ENERGY SAVING SPA SHEETS & CUSTOM EDGED COVERS

Spa sheets offer the same benefits as the pool covers except for the edging, as spa sheets come unedged. Using household scissors you can cut them to fit your spa's custom configuration. Custom edged spa covers also available.

- 173423 - SHEET 9' X 10' - UNEDGED, CUT-TO-SIZE**
- 500020 - SHEET 15' X 18' - UNEDGED, CUT TO SIZE**
- 183500-1 - CUSTOM EDGED SPA COVER; ONE YEAR WARRANTY**

SWIMMING POOL COVERS



ENERGY SAVING WELDED POOL COVERS

- Constructed of a closed cell cross-linked Polyethylene (PE) foam
- Laminated on the top and bottom with a woven PE scrim
- Scrim is coated with 2 mils of PE film and UV stabilizing additives
- Provides ballast holes to capture water while cover is on the pool to prevent wind lift
- Welding prevents panel separation
- Will not absorb water
- Only fully welded pool cover on the market

INDOOR POOL
ENERGY LOSS CHARACTERISTICS



■ Ventilation ■ Other ■ Evaporation

OUTDOOR POOL
ENERGY LOSS CHARACTERISTICS



■ Radiation to Sky ■ Losses to Ground & Other ■ Evaporation

COVER STORAGE SYSTEMS



The Bitterroot cover storage systems ensure proper handling and storage of pool covers. Made of electropolished 304L stainless steel, they are portable, strong and designed to support the weight of wet covers.

- Easy to deploy and retrieve pool covers
- Employs stainless steel pillow block reel tube bearings
- Equipped with stainless steel crank assembly
- Utilizes 6" diameter, non-marring polyethylene wheels
- Equipped with two foot-operated brakes
- Accommodates a maximum cover width of 20'



BITTERROOT III

BITTERROOT SERIES - DECK STORAGE SYSTEM

50120 - BITTERROOT I - SINGLE TUBE WINDER

- Storage capacity of 164 linear feet or 3,280 sq ft
- Total weight capacity of 643 lbs

50150 - BITTERROOT II - DOUBLE TUBE WINDER

- Storage capacity of 328 linear feet or 6,560 sq ft
- Total weight capacity of 1,102 lbs

50180 - BITTERROOT III - TRIPLE TUBE WINDER

- Storage capacity of 492 linear feet or 9,840 sq ft
- Total weight capacity of 1,562 lbs



WINDER COVERS

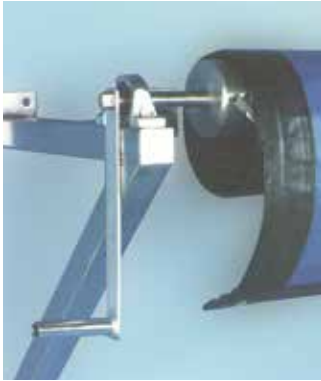
Protect your pool covers while in storage.

50190 - SINGLE WINDER COVER

50195 - DOUBLE/TRIPLE WINDER COVER

WALL-MOUNTED STORAGE SYSTEMS

Manually-operated or semi-automatic, wall-mounted pool cover storage systems conserve deck space and allow for ease of cover retrieval and deployment. Structurally designed to support the weight of wet covers. Both Blackfoot winders are manufactured of 304L stainless steel, which is electropolished and passivated to withstand harsh aquatic environments.



BLACKFOOT I WALL-MOUNTED STORAGE SYSTEMS

- The Blackfoot I is built for cover panel widths up to 20 feet.
- The manually operated storage system can typically accommodate two panels and up to 164 linear feet.

50220 - BLACKFOOT I MANUAL WINDER



BLACKFOOT II WALL-MOUNTED STORAGE SYSTEMS

- The Blackfoot II is a radio-controlled semi-automatic wall-mounted cover storage system.
- A simple hand-held transmitter provides smooth deployment and retrieval of pool covers.
- The solid state electronics are contained in a water tight, NEMA 4 enclosure, ensuring dependable operation and long life. Automatic, no crank needed.
- Operating current of 115 VAC, 1 phase, 60 Hz. Designed to support cover panels of up to 20' wide with a maximum storage capacity of 164 linear feet.

50200 - BLACKFOOT II RADIO CONTROLLED WINDER

POWER WINDER SYSTEM

Power Winder attachment is designed to power your existing pool cover reel system. Made of stainless steel and featuring automated functionality, the Power Winder makes the normally painstaking, manual process of deploying and retracting your pool cover fast and effortless.

FEATURES AND BENEFITS

- Made of black powder-coated stainless steel for durability
- Electronics and motors are in a water resistant enclosure that maximizes corrosion protection
- Reel system retracts large pool covers in minutes
- Semi-automatic winder reduces labor efforts by 40%
- Easy to use
- Reduces risk of shoulder and back injuries

153132 - POWER WINDER SYSTEM

153134 - POWER WINDER SHAFT ADAPTER (REQUIRED FOR SOME REEL MODELS)

173416 - POWER WINDER ADAPTER BRACKET (ONE NEEDED PER TUBE)



POOL LIFTS & ASSISTED ACCESS

Enabling equal access to aquatic facilities has always been a goal of Spectrum Aquatics®. We were proud to release our first aquatic lift in 1974 and after decades of refinement and technological advancement, we now offer over 20 different pool lift options. Choose between manually-powered, battery-powered and water-powered lifts – all with proprietary, robust operating systems. Our lifts offer ease of transfer while maintaining an open deck area. Spectrum Aquatics' lifts deliver optimal performance and withstand harsh aquatic environments — indoors and out.

ADA Compliance Overview

In 2010, the Federal Government approved into law the 2010 ADA Standards, requiring all commercial pools and spas to have an ADA-approved means of access by March 15, 2012. Compliance was later extended until January 31, 2013 and requires pools to install a ramp or a pool lift. A lift from Spectrum Aquatics® can help you easily achieve compliance.

WHAT MAKES A POOL LIFT COMPLIANT?

Required Lift Features:

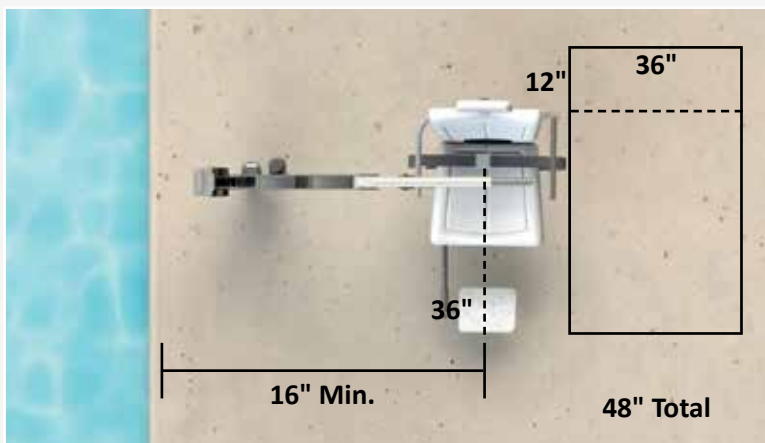
- 300 lbs minimum weight capacity
- Capable of unassisted operation from deck and water
- Solid seat at least 16" wide
- Armrests are optional (*except in California*), but if included must be removable or fold clear of the seat
- Footrest (*not required with lifts used in spas*)
- Capable of lowering the seat to a minimum depth of 18" below the stationary water level

Lift Location Specifications:

- Located in less than 48" of water (unless entire pool depth is greater than 48")
- Seat centerline location must be a minimum of 16" from the edge of the pool in raised position
- Open deck space minimum of 36" wide that extends forward a minimum of 48" from a line located 12" behind the rear of the seat located on opposite side of the seat from the water
- Must be level, with a slope no greater than 1:48 (2%) in all directions

Lift Operation Specifications:

- Seat Height - Lift should allow for a stop between 16" and 19" above the top of the deck when in the raised position
- The controls and operating mechanisms should be unobstructed when the lift is in use
- Operation of the lift should not require tight grasping, pinching or twisting of the wrists to operate



BATTERY POWERED ADA POOL LIFTS

We are pleased to offer an extensive selection of battery powered lifts to help you in designing your pool for compliance and inclusion. Each of our lifts have been designed with the end user in mind, including small details like flip up armrests on either side, optional padded headrests, and more. We look forward to helping you find the right lift for your facility each and every time.

Battery powered ADA pool lifts feature:

- Wired handset (unless noted otherwise)
- 90 lifts per battery charge
- Stainless steel construction (electropolished 304L grade) unless noted otherwise
- Coated with Spectra Shield[®] for maximum corrosion protection
- Stabilizer bar significantly improves lift stability during transfer
- Rotationally and vertically powered with 360 ° continuous power rotation
- Easy to install, even into existing concrete decks and anchors
- Proprietary robust operating and actuator outperforms the competition
- Flip up or fold down armrests for ease of transfer



AQUA BUDDY[®]

- 350 lb weight capacity
- Self-operable
- Powder-coated stainless steel construction
- Quiet and smooth performance
- Spacious seat with excellent lumbar support designed for ease of transfer
- Accommodates setback of 9" - 23" from centerline of anchor, and a maximum water draft of 10"



Includes:

- 5-year structural warranty, 2-year electronics warranty
- 24 volt battery and charger
- Concrete anchor system
- Dual flip up armrests

P/N: 1730116



HORIZON BP 450 & 450 DELUXE

- 450 lb weight capacity
- Quiet and stable operation
- Accommodates set back of 6" to 33" and water draft up to 12"
- Spacious seat offers excellent lumbar support and ease of transfer
- Powder coating available to match any pool setting



Includes:

- 5-year structural warranty, 2-year electronics warranty
- 24 volt battery and charger
- 2 wireless remote controls
- Padded headrest (Deluxe models)
- Adjustable footrest
- Seatbelt

P/Ns: 2010102 (BP 450) & 2010102-DLX (BP 450 Deluxe)

BATTERY POWERED ADA POOL LIFTS



HORIZON LONG REACH BP 300 & BP 300 DELUXE



- 300 lb weight capacity
- Quiet and stable operation
- Accommodates set back of 6" to 40" and water draft up to 12"
- Spacious seat offers excellent lumbar support and ease of transfer

Includes:

- 5-year structural warranty, 2-year electronics warranty
- 24 volt battery and charger
- 2 wireless remote controls
- Padded headrest (Deluxe models)
- Adjustable footrest
- Seatbelt

P/Ns: 2030086 (BP 300) & 2030086-DLX (BP 300 Deluxe)

HORIZON ACCESSORIES

- Anchors sold separately
- Protective cover
- Extra 24 volt battery and charger
- Extra wireless remote
- Spine board attachment and stability strap
- Transport cart



Anchor (23638)



Cover (54377)



Battery (143007)



Remote (153399)

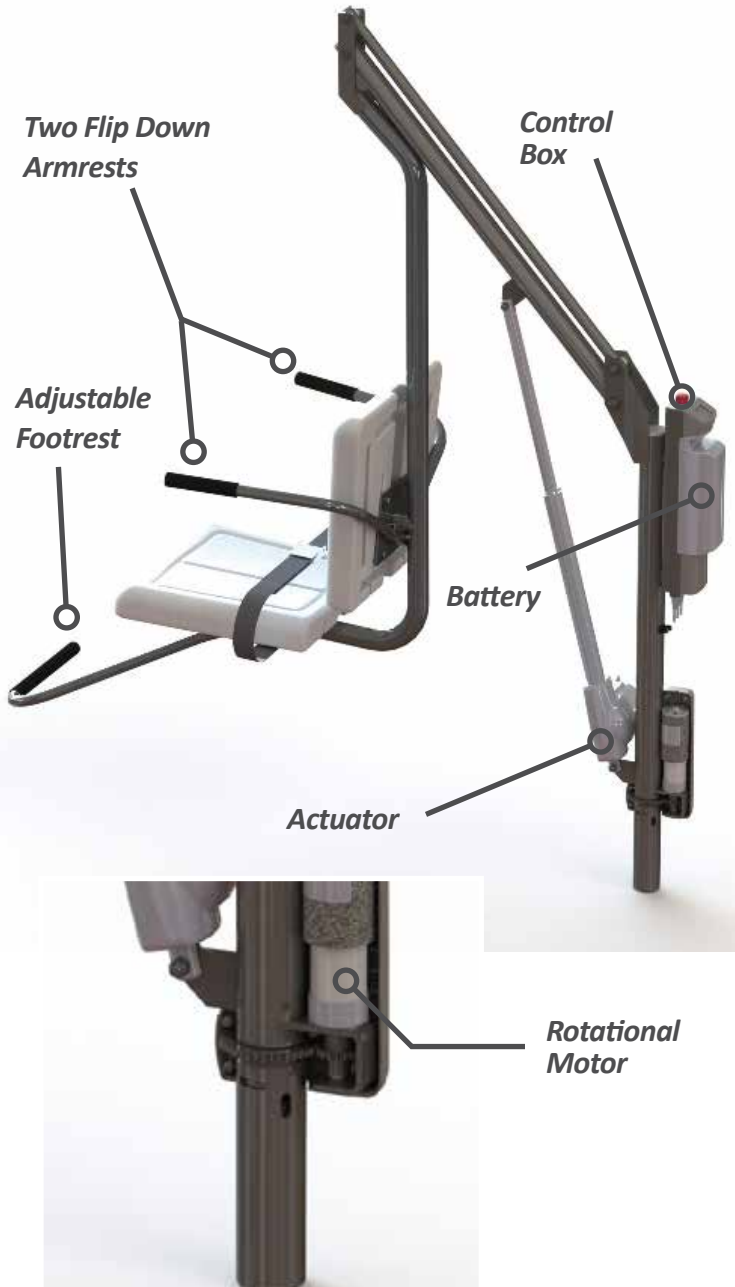


Transport Cart (54523)

MOTION TREK FAMILY



The Motion Trek Family of lifts are ADA compliant, battery-powered units that are self-operable from both the deck and water. With robust operating systems the Motion Trek 350 and 400 are designed for in-ground pools and spas.



ROTATION

- Safe, smooth operation
- Sealed motor made in USA
- Grease fittings for ease of maintenance

ACTUATOR

- Corrosion resistant to withstand harsh aquatic environment
- Smooth, quiet operation (60 decibels or less)
- Plastic and anodized aluminum housing
- Smooth start and stop technology

BATTERY

- Locking battery
- No cables – easy to install and remove
- Cradle charge

CONTROL BOX

- E-Stop button to safely stop the lift in an emergency
- Wired control for increased reliability
- Larger buttons - easy to use
- Sound alert system for low battery, won't leave a user stranded
- *IP 67, fully sealed for water intrusion

ARMRESTS

- 2 flip down armrests provided
- Transfer from either side

WEIGHT CAPACITY

- Motion Trek 350 = 350 lbs; Motion Trek 400 = 400 lbs

FRAME

- US made and sourced stainless steel
- 100% stainless – no aluminum to corrode
- Electropolished, passivated and coated with Spectra Shield® for maximum corrosion protection

UL LISTED

- Engineer testing and certification process
- A UL listing guarantees that every product is accepted only at the highest standards

**Intrusion protection rating (IP). Typical "waterproof" IP ratings are IP67. The larger the number, the greater the protection.*

**Spine board attachments available*



BATTERY POWERED ADA POOL LIFTS



MOTION TREK® BP 350 & BP 350 DELUXE

- 350lb weight capacity
- Self-operable
- Accommodates setback of 6" to 28" and a water draft up to 13"
- Seatbelt (Deluxe models)
- Adjustable padded headrest (Deluxe models)
- Flip-up footrest with footboard (Deluxe models)

153121 - MOTION TREK® BP 350 WITH ANCHOR
163370 - MOTION TREK® BP 350 WITHOUT ANCHOR

153121-DLX - MOTION TREK® BP 350 DELUXE WITH ANCHOR
163370-DLX - MOTION TREK® BP 350 DELUXE WITHOUT ANCHOR



MOTION TREK® BP 400 & BP 400 DELUXE

- 400lb weight capacity
- Self-operable
- Accommodates setback of 6" to 28" and a water draft up to 13"
- Seatbelt
- Adjustable padded headrest (Deluxe models)
- Flip-up footrest with footboard (Deluxe models)

163145 - MOTION TREK® BP 400 WITH ANCHOR
163371 - MOTION TREK® BP 400 WITHOUT ANCHOR

163145-DLX - MOTION TREK® BP 400 DELUXE WITH ANCHOR
163371-DLX - MOTION TREK® BP 400 DELUXE WITHOUT ANCHOR



PORTABLE MOTION TREK® BP 300 & BP 300 DELUXE

- 300lb weight capacity
- Self-operable
- Spacious seat with excellent lumbar support designed for ease of transfer
- Quiet and stable operation
- Accommodates a variety of setbacks up to 19" and water draft up to 6"
- Lock down kit needed for ADA Compliance
- Seatbelt

165600 - PORTABLE MOTION TREK® BP 300
165600-DLX - PORTABLE MOTION TREK® BP 300 DELUXE
42672 - LOCK DOWN KIT FOR ADA COMPLIANCE



TRAVELER® FAMILY

QUALITY & DURABILITY

- All stainless steel construction
- Triple protected for maximum corrosion resistance in harsh pool environments due to Spectra Shield® coating
- Electropolished and passivated
- Available in 316L

PERFORMANCE

- Avoids substantial repairs, labor costs and lift downtime
- Completely sealed waterproof battery
- Battery delivers 90 lifts between charges - no other lift manufacturer compares
- 350–500 lb. load capacity depending on model
- Rotationally & vertically powered with 360° continuous rotation
- Stabilizer bar improves ease of transfer
- Heavy duty actuator system

VERSATILITY

- Works with a broad range of deck configurations
- Offers setbacks ranging from 6" to 40" and a water draft up to 12"
- Allows loading and unloading from any desired position or angle
- Small footprint ideal for limited deck space
- Completely wireless system
- Wheelchair and spine board attachments available



BATTERY POWERED ADA POOL LIFTS



TRAVELER®

- Wireless handset
- 500lb weight capacity
- Self-operable
- Spacious seat with excellent lumbar support designed for ease of transfer
- Quiet and stable operation
- Accommodates setback of 6" to 33" and water draft up to 12"
- Available in electropolished 316L stainless steel



27610 - TRAVELER®

140290 - TRAVELER® 316L



LONG REACH TRAVELER®

- Wireless handset
- 350lb weight capacity
- Self-operable
- Spacious seat with excellent lumbar support designed for ease of transfer
- Quiet and stable operation
- Accommodates setback of 6" to 40" and water draft up to 12"



54129 - LONG REACH TRAVELER®



WATER POWERED ADA POOL LIFTS

Our water powered ADA pool lifts are built to last the test of time. We are pleased to offer an extensive selection of water powered lifts to help you in designing your pool for compliance and inclusion. Each of our lifts have been designed with the end users and pool and spa facility owners in mind. Water powered lifts eliminate the need to recharge batteries, and have very few parts that are subject to daily wear and tear. We look forward to helping you find the right lift for your facility each and every time.

Water powered ADA pool lifts feature:

- Stainless steel construction (electropolished 304L or 316L grade)
- Coated with Spectra Shield[®] for maximum corrosion protection
- Quiet and stable operation
- Weight capacities up to 600lbs



GALLATIN[®] WP 400 POOL & SPA

- 400lb weight capacity at 55 PSI
- Self-operable from the deck and the water
- Electropolished stainless steel - 304L grade
- Spacious seat with excellent lumbar support; designed for ease of transfer
- Accommodates setback of 18" to 30" and water draft up to 12"
- Easy to install, even into existing concrete decks
- Pool & spa application
- Padded headrest
- Flip-up footrest



27336 - GALLATIN[®] WP 400



GLACIER[®] WP 600

- 600lb weight capacity
- Electropolished stainless steel - 316L grade
- Wheelchair placement and removal



26400 - GLACIER[®] WP 600

WATER POWERED ADA POOL LIFTS

MANUAL POWERED POOL LIFTS



LOLO® WP 400 POOL ONLY

- 400lb weight capacity at 55 PSI
- Self-operable from the deck and the water
- Electropolished stainless steel - 304L grade
- Spacious seat with excellent lumbar support; designed for ease of transfer
- Accommodates setback of 18" to 30" and water draft up to 12"
- Easy to install, even into existing concrete decks
- Pool application only
- Padded headrest
- Flip-up footrest

27550 - LOLO® WP 400



ELKHORN® MP 400

- NON-ADA COMPLIANT
- 400lb weight capacity
- Only manual powered lift with supporting load calculations on the market
- Easy to operate
- Easy to install, even into existing concrete decks
- Single anchor point
- Hydraulic ram lifting mechanism
- Portable and lightweight, weighing less than 60lbs
- Economical
- Accommodates multiple setbacks, allowing for installation on pools/spas with large gutters and/or coping stones

28500 - ELKHORN® MP 400

28510 - ELKHORN® ANCHOR

"Our lift works great and has allowed my wife to get in the pool and maintain the mobility she has worked hard to ge back over the past year."

-- James R (Rick) January

POOL LIFT ANCHORS



BRONZE ANCHOR

- Horizon and Traveler lifts anchor
- Lid and key included
- Designed for 1.90" O.D lifts
- Heavy duty bronze construction

23638 - HEAVY DUTY BRONZE ANCHOR



COMPOSITE ANCHOR

- Aspen, Elkhorn, Freedom, and Motion Trek lifts anchor
- Lid and key included
- Stainless steel bonding screw provided
- 6" deep
- Fabricated of glass filled polypropylene

28510 - COMPOSITE ANCHOR



PRESET ANCHOR

- Gallatin & Lolo lifts anchor
- New construction applications
- Grounding lug and anchor lids included
- Stainless steel construction

27450 - PRESET ANCHOR



RETROFIT ANCHOR

- Swim-Lift, Gallatin, and Lolo retrofit anchor
- Used in existing installation applications
- Concrete expansion anchor
- Anchor cap included

27400 - RETROFIT ANCHOR



WOOD DECK ANCHOR

- Aspen, Elkhorn, Freedom, and Motion Trek lifts - wood deck anchor

28515 - WOOD DECK ANCHOR

Custom anchors and adapters are available for all lifts with unique anchoring applications. Paver anchors are also available.

LIFT PARTS & ACCESSORIES

Motion Trek® Family

- 153607 - Battery
- 153601 - Control Box
- 153605 - Charger Cradle
- 153604 - AC/DC Adapter
- 153600 - Actuator
- 153603 - Handset
- 28510 - Composite Anchor
- 28515 - Wood Deck Anchor
- 75521 - Surface Mount Anchor
- 47949 - Motion Trek Cover
- 29901 - Cart
- 1730060 - Spine Board Attachment

Horizon® & Traveler® Family

- 42932 - Wheelchair for Traveler
- 54377 - Cover
- 42323 - Spine Board for Traveler
- 54523 - Cart for Horizon & Traveler
- 140290 - LR Traveler Cover

Water Powered Family

- 27364 - Water Powered Cover
- 27028 - Spectra Force® Booster System
- 20400 - Water Box
- 54372 - Attachment for Rim Flow Gutters

AQUA Buddy®

- 153607 - Battery
- 153601 - Control Box
- 153605 - Charger Cradle
- 153604 - AC/DC Adapter
- 1910223 - Cover

Miscellaneous

- 143007 - Battery - Wired
- 42732 - Battery Charger
- 133036 - Receiver – Wired
- 42644 - ADA Compliant Lift Available Sign
- 47906 - Spectra System 1-Clean™
- 132038 - Armrest (Freedom)
- 13297 - Head Rest Pad
Seatbelt



Extend the life of your lift with the Lift Maintenance Kit

Includes:

- 32oz Spectra Shield - Stainless steel protectant to be applied after cleaning
- 22oz Spectra Clean System 1 - Citric based Stainless steel cleaner and passivation solution
- Disposable rags
- Scratch-less scrubbing pad
- 24V wired battery

152161-MT - Lift maintenance kit for Motion Trek & Aqua Buddy lifts

SPECTRUM LIFT REFERENCE QUICK GUIDE

MODEL	PART #	LIFTING CAPACITY	POWER SOURCE	ADA?	SETBACK REQ.	WATER DRAFT MAX	# OF LIFTS PER BATTERY CHARGE	STRUCTURAL WARRANTY	WEIGHT
Aqua Buddy BP 350	1730116	350 lbs	Battery	Yes	9" - 23"	10"	90+	5 years	120 lbs
Elkhorn MP 400	28500	400 lbs	Manual	No	12" - 24"	12"	N/A	5 years	57 lbs
Gallatin WP 400	27336	400 lbs	Hydraulic	Yes	18" - 30"	12"	N/A	5 years	270 lbs
Glacier WP 600	26400	600 lbs	Hydraulic	N/A	N/A	N/A	N/A	5 years	860 lbs
Horizon BP 450	2010102	450 lbs	Battery	Yes	6" - 33"	12"	90+	5 years	250 lbs
Horizon BP 450 DLX	2010102-DLX	450 lbs	Battery	Yes	6" - 33"	12"	90+	5 years	260 lbs
Horizon Long Reach BP 300	2030086	300 lbs	Battery	Yes	6" - 40"	12"	90+	5 years	200 lbs
Horizon Long Reach BP 300 DLX	2030086-DLX	300 lbs	Battery	Yes	6" - 40"	12"	90+	5 years	210 lbs
Lolo WP 400	27550	400 lbs	Hydraulic	Yes	18" - 30"	12"	N/A	5 years	270 lbs
Motion Trek BP 350	153121	350 lbs	Battery	Yes	6" - 28"	13"	90+	5 years	110 lbs
Motion Trek BP 350 DLX	153121-DLX	350 lbs	Battery	Yes	6" - 28"	13"	90+	5 years	115 lbs
Motion Trek BP 400	163145	400 lbs	Battery	Yes	6" - 28"	13"	90+	5 years	110 lbs
Motion Trek BP 400 DLX	163145-DLX	400 lbs	Battery	Yes	6" - 28"	13"	90+	5 years	115 lbs
Portable Motion Trek BP 300	165600	300 lbs	Battery	Yes	2" - 19"	6"	90+	5 years	1240 lbs
Portable Motion Trek BP 300 DLX	165600-DLX	300 lbs	Battery	Yes	2" - 19"	6"	90+	5 years	1240 lbs
Traveler BP 500	27610	500 lbs	Battery	Yes	6" - 33"	12"	90+	5 years	280 lbs
Traveler (Long Reach) BP 350	54129	350 lbs	Battery	Yes	6" - 40"	12"	90+	5 years	280 lbs



RAILS & LADDERS

Spectrum Aquatics' standard rails are available in various lengths, shapes, wall thicknesses and diameters. All rails and ladders are passivated in an environmentally-friendly citric acid solution that provides a uniform and highly corrosion-resistant finish that is further protected by Spectra Shield®.

Spectrum's standard rails comply with the 2010 ADA Standards for Accessible Design and provide the best possible gripping surface for the user. Anchors & escutcheons are sold separately.

Why Choose Spectrum Rails?

- High-quality, 100% stainless steel rails are elegant
- Unique in design, durable and easy to maintain
- Standard rails meet ADA requirements
- Endless customization options to suit your facility needs

Material Type & Grade Available:

- 304L - Stainless Steel
- 316L - Marine Grade Stainless Steel
- Powder Coat – Available in all RAL colors & a variety of finishes
- Variety of outside diameters and wall thicknesses
- Square/rectangular tubing options available

GRAB & STAIR RAILS

Spectrum Aquatics® specializes in crafting functional and beautiful grab rails. Rails are fabricated from a variety of stainless steel material types (304L and 316L) as well as a variety of outside diameters and wall thicknesses (1.90" x .065", 1.50" x .083", 1.90" x .109", 1.50" x .120", 1.90" x .145").



COHO

The 26" Coho works best with commercial swimming pools with flat, level decks, standard copings and curbs.

37150 - 26" COHO
37150-30 - 30" COHO



BURBOT

The Burbot grab rails accommodate commercial pools with a longer setback. These long grab rails are ideally suited for use on swimming pools that utilize rollout or deck-level gutter design configurations.

35113 - 26" BURBOT
35110 - 30" BURBOT



CISCO

Cisco rails were designed for commercial swimming pools and are ideally suited for use on swimming pools that utilize skimmers or a typical gutter design configuration.

35117 - 17" CISCO
35121 - 26" CISCO
35124 - 30" CISCO



PIKE ADJUSTABLE

The Pike Adjustable rail has front legs which provide for individual rail adaptability. Commonly used for pools which employ unusual curbs, gutters or trench drain configurations.

35099 - 26" PIKE ADJUSTABLE



KOKANEE

The Kokanee is a perfect fit for applications with automatic pool covers or other obstacles.

35005 - 48" KOKANEE
35007 - 60" KOKANEE



VARDEN

This long reach stair rail allows for on-deck anchoring, no in-pool anchor is required.

36246 - 48" VARDEN
36251 - 60" VARDEN

GRAB & STAIR RAILS



BEND STAIR RAILS

These are ideally suited for use on commercial swimming pool and spa applications.

- 35125 - 48" 2 BEND STAIR RAIL
- 35126 - 60" 2 BEND STAIR RAIL
- 35127 - 72" 2 BEND STAIR RAIL
- 35009 - 48" 3 BEND STAIR RAIL
- 35011 - 60" 3 BEND STAIR RAIL
- 35013 - 72" 3 BEND STAIR RAIL

CRAFTSMANSHIP

Our team is here to help you turn your vision into reality. Our in-house engineering and design team will listen to your needs and guide you in the right direction. Our high-quality stainless steel and state-of-the-art manufacturing processes fabricates rails that fit your specifications.



CUSTOM RAILS

Spectrum Aquatics® specializes in crafting functional and beautiful custom railings. Rails are fabricated from a variety of stainless steel material types (304L and 316L) as well as a variety of outside diameters and wall thicknesses (1.25" x .065", 1.90" x .065", 1.50" x .083", 1.90" x .109", 1.50" x .120", 1.90" x .145"). Custom color powder-coating options are also available.

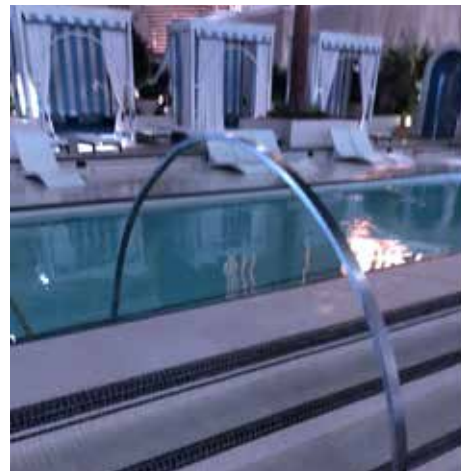


Form & Function

Spectrum Aquatics' in-house engineering and design team turns your ideas into reality. Our high-quality stainless steel and state-of-the-art manufacturing processes fabricate rails that fit your specifications.

Custom Rail Options

- Diving Tower Railings
- Guard Rails
- Grab Rails
- Hand Rails
- Therapy Rails
- In-Pool Exercise Rails
- Ramp Rails
- Stair Rails
- Stadium Rails
- Spectator/Crowd Control Rails



MADE FROM 100% U.S. MADE AND MELTED STAINLESS STEEL

LADDERS & STEPS

Spectrum's ladders come in a variety of setbacks including 25", 27", 30" or 36" and are equipped with deluxe treads. The 20" wide by 5" deep steps HDPE tread incorporates molded nut inserts, eliminating the need for exterior nuts which can have sharp surfaces. It is also equipped with a step reference locator. Mounting anchors and escutcheons are sold separately. Customization is available.

Spectrum Aquatics® specializes in crafting functional and beautiful ladders and steps. Ladders and Steps are fabricated from a variety of stainless steel material types (304L and 316L) as well as a variety of outside diameters and wall thicknesses (1.90" x .065", 1.50" x .083", 1.90"x .109", 1.50" x .120", 1.90"x .145").



STANDARD LADDERS

- 35129 - 2 STEP STANDARD LADDER | 35131 - 3 STEP STANDARD LADDER
- 35133 - 4 STEP STANDARD LADDER | 35135 - 5 STEP STANDARD LADDER



HEAVY-DUTY LADDERS WITH CROSS BRACE

- 36178 - 2 STEP HEAVY DUTY LADDER | 36399 - 3 STEP HEAVY DUTY LADDER
- 36401 - 4 STEP HEAVY DUTY LADDER | 36403 - 5 STEP HEAVY DUTY LADDER



MISSOULA THERAPY LADDER

The Missoula Therapy Ladder™ offers low cost access. These are custom designed to fit each pool.

- Supports 400lb load
- 10" average rise
- Non-slip 22" treads
- 1.5" diameter raised hand rail
- 15 degree slope allows for ease of entry and egress

- 25013 - 3 STEP MISSOULA THERAPY LADDER | 25019 - 4 STEP MISSOULA THERAPY LADDER
- 25025 - 5 STEP MISSOULA THERAPY LADDER



BOZEMAN ADA THERAPY STEPS

These portable therapy steps are custom designed to provide proper fit and easy access. These are custom designed to fit each pool.

- Supports 400lb load
- 23 1/2" wide treads
- Slip-resistant and UV stabilized steps
- Durable 4" wheels for ease of transport
- Poly netting provided under stairs to avoid entrapment
- 1.5" diameter raised handrail

- 57920 - 3 STEP BOZEMAN ADA THERAPY STEPS | 57921 - 4 STEP BOZEMAN ADA THERAPY STEPS
- 57922 - 5 STEP BOZEMAN ADA THERAPY STEPS | 57923 - 6 STEP BOZEMAN ADA THERAPY STEPS



RECESSED MOLDED STEP

20% Glass Filled Polypropylene material.

- 183013 - RECESSED MOLDED STEP



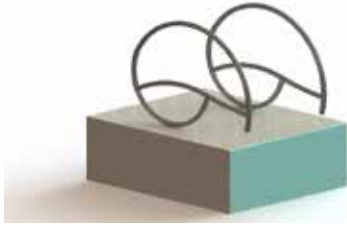
RECESSED STAINLESS STEEL STEP

Slip-resistant and fabricated from 304L stainless steel with an all welded design.

- 23452 - RECESSED STAINLESS STEEL STEP

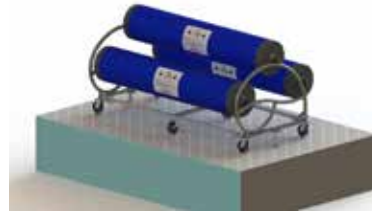
THE SOLARIAN

Add style and elegance to your pool without sacrificing functionality or safety. The Solarian is a designer line of themed pool deck equipment. Ladders, rails, lifeguard chairs, diving boards and pool blanket winders are all designed to give your pool an updated, harmonized look. Our products are made of 304L (or 316L upon request) US stainless steel, electropolished and passivated with Spectra Shield® for maximum corrosion resistance. Powder coating options available. Products can be purchased in any combination as well as individually. This unique product line is offered in 1.5" diameter and 1.9" diameter tubing. ***Anchors & Escutcheons Are Sold Separately**



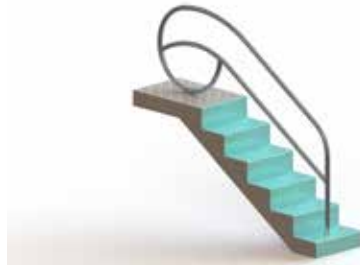
SOLARIAN GRAB RAIL

144018 Solarian Grab Rail (Pair)



SOLARIAN COVER WINDER

144043-1 Solarian Single Blanket Winder
144043-2 Solarian Double Blanket Winder
144043-3 Solarian Triple Blanket Winder



SOLARIAN STAIR RAIL

134886-48 Solarian Stair Rail 48"
134886-60 Solarian Stair Rail 60"
134886-72 Solarian Stair Rail 72"



SOLARIAN LADDER

134640-02-.065 2 Step Solarian 30" Ladder
134640-03-.065 3 Step Solarian 30" Ladder
134640-04-.065 4 Step Solarian 30" Ladder



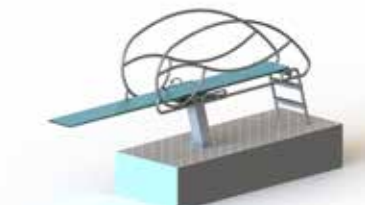
SOLARIAN PORTABLE LIFEGUARD CHAIR

144098-4 Solarian 4' Portable Lifeguard Chair
144098-6 Solarian 6' Portable Lifeguard Chair



SOLARIAN PERMANENT LIFEGUARD CHAIR

144027-4 Solarian 4' Permanent Lifeguard Chair
144027-6 Solarian 6' Permanent Lifeguard Chair



SOLARIAN DIVE STAND

144088 Solarian 1M Dive Stand

PORTABLE FILTRATION SYSTEMS

Spectrum Aquatics® manufactures a wide variety of portable filtration systems to support all pool sizes. Made from stainless steel and incorporating durable Sta-Rite pumps, these vacuums provide power and dependability. All metallic components are passivated for maximum corrosion resistance. In addition, every stainless steel product manufactured by Spectrum is protected by Spectra Shield®. Hoses, fitting kits and vacuum heads sold separately.

- Stainless steel filter canister and cart
- Heavy-duty pneumatic wheels
- Outfitted with a 155 or 105 square foot Harmsco® filter

WILDCAT PORTABLE FILTRATION SYSTEMS

10670 - WILDCAT E1

The Wildcat E1 pump cart uses a 1 HP, 110 VAC Sta-Rite Dyna-Pro pump to move approximately 5,400 gallons of water per hour.

- 2" shut off valves and quick-connect hose fitting
- 100' electrical cord
- 155 square foot filter
- GFCI shock protector

10640 - WILDCAT G3.5

The Wildcat G3.5 gas engine model is for large outdoor facilities where electrical access may be limited. This unit moves approximately 8,000 gallons of water per hour.

- 155 square foot filtering
- 2" shut off valves and quick-connect hose fitting

10660 - WILDCAT G5.5

The Wildcat G5.5 pump cart uses a 5.5 HP gas engine driven pump. The unit moves approximately 9,300 gallons of water per hour.

- 155 square foot filter
- 2" shut off valves and quick-connect hose fittings



PORTABLE FILTRATION SYSTEMS



HARMSCO PORTABLE PUMP CART

Economical units for cleaning mid-sized pools. These units include a Sta-Rite pump. Hoses, fitting kit and vacuum head are sold separately.

Stainless steel filter canister and cart

100' electrical cord

GFCI shock protector

10700 - BKP 1 HP 110 VAC

1.5" Connection

105 square foot filter

TRANSFER PUMP

The Savage vacuum pump includes Sta-Rite pump, stainless steel cart, a check valve on the pump suction, gate valve on the pump discharge, a hose bib connection for easy priming with a waterproof switch and barbed hose fittings for the connection of discharge and suction hoses.

- Stainless steel cart
- 6" hard rubber wheels
- 100' electrical cord
- GFCI shock protector

11100-00 - SAVAGE 1 HP, 110 VAC

1½" suction and 1½" discharge with flow rates to 5000 gph



PORTABLE FILTRATION SYSTEM ACCESSORIES



PUMP CART

This high quality stainless pump cart is a compact unit, pre-punched to accept most American-made pumps. It includes a cord holder and 6" hard rubber wheels.

10780 - PUMP CART



HEAVY DUTY HOSE CADDY

Durable stainless steel reel which stores vacuum hose when not in use. The portable caddy holds up to 75' of 2" hose or 175' of 1½" hose.

12500 - HOSE CADDY

SPECTRA-CLEAN™ STAINLESS STEEL CLEANER

Stainless steel is a corrosion resistant alloy; however it may display rusting characteristics under certain conditions. Routinely wiping down rail surfaces and rinsing with non chlorinated water minimizes the potential for corrosion. In the event stainless equipment displays stubborn rust stains or heavy deposit build-up, our specialized cleaning materials will remove these foreign substances and restore the original rail finish.

**47906 - SPECTRA-CLEAN™ SYSTEM 1 — 4 PACK, 22OZ.
EACH, DAILY USE STAINLESS STEEL CLEANING**

**47904 - SPECTRA-CLEAN™ SYSTEM 3 — 1 GALLON
SEVERE USE STAINLESS STEEL CLEANING**

**47905 - SPECTRA-CLEAN™ SYSTEM 2 — 1 GALLON
EXTREME USE STAINLESS STEEL CLEANING**

**57373 - SPECTRA SHIELD® — 1 GALLON
STAINLESS STEEL PROTECTANT**



ANCHORS & PARTS



CUP ANCHOR

For securing racing lines and safety ropes in concrete and gunite pools. The 4" cup is constructed with 316L stainless steel. Kit includes a bonding screw.

- 58316 - 4" CUP ANCHOR WITH REMOVABLE EYEBOLT, 316L STAINLESS STEEL
- 58280 - 3" ROUND WITH REMOVABLE EYEBOLT, CHROME PLATED BRONZE



BRONZE STANCHION 6" ANCHOR KIT

For 1.90" O.D. stanchions, water polo goals or Traveler lift. Kit includes anchor, lid and key.

- 23638 - BRONZE 6" ANCHOR KIT
- 36450 - LID & KEY REPLACEMENT FOR BRONZE 6" ANCHOR



STAINLESS STEEL STANCHION ANCHOR

6" for 1.90" O.D. stanchions; water polo goals and other deck equipment. Includes anchor, lid and key. Made entirely of 316L grade stainless steel.

- 24060 - STAINLESS STEEL STANCHION ANCHOR KIT, 316L SS



4" STANDARD-DUTY BRONZE ANCHOR

For rails, ladders and other deck equipment.

- 24010 - 4" STANDARD-DUTY BRONZE ANCHOR FOR 1.90" RAILS
- 54052 - 4" STANDARD-DUTY BRONZE ANCHOR FOR 1.50" RAILS



STAINLESS STEEL COVER FOR BRONZE WEDGE ANCHOR

- 24012 - 304L STAINLESS STEEL COVER FOR 1.90" BRONZE WEDGE ANCHOR



STAINLESS STEEL WEDGE ANCHOR

Stainless steel wedge anchor for 1.50" O.D. railings. Body is 6" deep and is 304L cast stainless steel; wedge is cast bronze and hardware is 304L stainless steel.

- 24090 - STAINLESS STEEL WEDGE ANCHOR FOR 1.50" RAILS



ESCUTCHEON PLATES

- 35214 - 316L STAINLESS STEEL KEYHOLE SET SCREW FOR 1.90" O.D. RAILS
- 35222 - 316L STAINLESS STEEL KEYHOLE SET SCREW FOR 1.50" O.D. RAILS
- 24120 - 304L STAINLESS STEEL ROUND ESCUTCHEON FOR 1.90" O.D. RAILS
- 24095 - 316L STAINLESS STEEL ROUND ESCUTCHEON FOR 1.50" O.D. RAILS

ANCHORS & PARTS

1.5" SPECTRA LOCK™ COMPRESSION ANCHOR

Engineered to address corrosion issues in pool environments and provide easier rail and ladder installation.



- Reduces maintenance costs & cleaning time
- Eliminates debris, corrosion and heavy water deposits typically found lodged between the wedge anchor inside wall and assembly
- Ideal for underwater installation of handrails and ramp rails where rust bleeds can lower water quality
- Ideal for removing and installing ladders or rails during pool deck maintenance, repairs and renovation
- Eliminates alignment issues and the need for frequent bolt tightening common with wedge anchor assembly
- Sturdy and aesthetic appeal
- Built-in anchor compression ring applies even pressure on tubing, decreasing potential damage to rail or ladder
- Escutcheon-less, flush-mount design gives the rail and deck a finished look
- Accommodates recommended ADA handrail and ladder tubing diameters
- Protected by U.S. Patent 7437857 Available in white and custom colors

42696 - SPECTRA LOCK™ COMPRESSION ANCHOR

42696- W - SPECTRA LOCK™ COMPRESSION ANCHOR WHITE

24094 - SPANNER WRENCH

24098 - COMPRESSION ANCHOR CAP

23636 - ANCHOR KEY



LADDER BUMPERS

30038 - FEMALE 1.50" O.D.

30021 - FEMALE 1.90" O.D.

16644 - MALE 1.90" O.D.



UNIVERSAL REPLACEMENT TREAD FOR LADDERS

- Made of UV stabilized polypropylene
- 20" L x 5" W
- Converter attachment allows for use with both 1.50" and 1.90"
- 5" Deep
- Hardware included

44986 - UNIVERSAL REPLACEMENT TREAD



SPECTRUM REPLACEMENT TREAD FOR LADDERS

- Made of high-density polyethylene (HDPE)
- 20" long, with a curved design featuring a 6" width at the center and 3¼" at the ends
- Available for 1.50" and 1.90" O.D. rails
- Hardware included

24411 - REPLACEMENT TREAD FOR 1.50" O.D. RAIL

24412 - REPLACEMENT TREAD FOR 1.90" O.D. RAIL

ABOUT OUR PARENT COMPANY

PlayCore is a purpose-driven company that develops leading research and a complete portfolio of innovative products, programs, and services to build healthy communities through play and recreation. Learn more at www.playcore.com.



Building **communities** through **play** & **recreation**™

THE PLAYCORE AQUATICS GROUP

The PlayCore Aquatics Group is the ultimate resource for creating all of your aquatic experiences. We specialize in providing your facility with unparalleled support throughout your entire journey in selecting the right amenities for your facility including architectural and interactive water features, water play, aquatic competition, compliance, safety, adventure play, and ongoing maintenance. Our team of experts is committed to making your dream a reality and will work with you to find exactly what you need (even if it's a custom solution), at a price point that meets your budget requirements. After the completion of your installation, we provide ongoing support for the lifetime of your product to ensure that you get the most out of your recreational, commercial, municipal, or competitive facility.



fountain people™

A PLAYCORE Company

4600 Hwy 123
San Marcos, TX 78666
512.392.1155
fountainpeople.com



A PLAYCORE Company

7100 Spectrum Lane
Missoula, MT 59808
800.791.8056
spectrumproducts.com



7100 Spectrum Lane
Missoula, MT 59808
800.624.1235
altapoolcovers.com



WATER ODYSSEY™

BY FOUNTAIN PEOPLE
A PLAYCORE Company

4600 Hwy 123
San Marcos, TX 78666
512.392.1155
waterodyssey.com



A PLAYCORE Company

10601 Oak St NE
St. Petersburg, FL 33716
888.426.8511
aquaworxusa.com



1551 East 11th Street
Loveland, CO 80537
800.279.0111
coloradotime.com

SPECTRUM AQUATICS® STANDARD TERMS & CONDITIONS OF SALE

Terms of Sale: Standard payment terms for customers that are registered businesses within the United States and Canada and meet the company's credit criteria are net 30 days from invoice date, unless otherwise agreed upon by Spectrum Aquatics. If the customer fails to pay within payment terms, the company reserves the right to defer shipments until payment has been made and has the option to cancel all or any part of an unshipped order. A 1.5% per month finance charge may be imposed on all past due accounts. Customers within the United States or Canada, without a credit history, may purchase products and pay with check by mail or charge the purchase of products to a credit/debit card (Visa, MasterCard or American Express). Any checks or electronic debit authorization that are returned for any reason will be charged a \$30 non-sufficient fee.

To establish a credit account with Spectrum Aquatics, the customer must be within the United States or Canada and must complete a credit application and thus, furnish such information as requested by Spectrum Aquatics. Credit applications will not be accepted without a signature from an owner or appropriate company officer. Spectrum Aquatics reserves the right in its absolute discretion to grant, refuse or discontinue any extensions of credit, or reduce or suspend any credit limit at any time.

Prices: Prices are F.O.B. factory and do not include freight charges. The possession of a price list or other pricing information does not constitute an offer or agreement to sell. Prices are subject to change without notice and are in US Dollars. Taxes, duties and other fees are the sole responsibility of the buyer. Prices shown do not include any federal, state, or local taxes and shall be billed as a separate item and paid by the Customer. Orders are accepted with the understanding that such taxes will be added, as required by law. Sales tax will be charged unless the customer has a valid sales tax resale or exemption certificate on file with Spectrum Aquatics.

Price quotations for standard products are valid for 30-days. Price quotations for custom products and commercial projects are valid for 60-days. Price quotations for custom design or special items are subject to change predicated on the information provided by the sellers at the time of quotation, as opposed to the definitive information presented at the time of order entry, engineering or fabrication.

Customer Orders: Order placement requires a hard copy purchase order or signed copy of a quotation. If purchase order is verbal, with no hard copy (purchase order or signed quotation) confirmation, seller will not assume responsibility for errors related to, but not limited to, date of shipment, destination of shipment, items shipped or quantity of items shipped. Order must be shippable within 90-days of placement to hold original pricing. Purchase orders originating outside the United States and Canada require prepayment or an irrevocable letter of credit at time of order entry.

Order Cancellation: Orders for standard cataloged products, if canceled within 24 hours, will be assessed a \$200.00 cancellation fee. The seller must receive order cancellation in writing. Once, accepted, orders can only be canceled after 24 hours with the consent of Spectrum Aquatics and on terms which will indemnify Spectrum Aquatics against loss. Canceled orders after 24 hours will be subject to a restocking fee. Custom equipment is non-cancellable.

Freight Procedure & Claims: The transfer of ownership from Spectrum Aquatics occurs once the load is signed over to the freight company (FOB factory). The customer is responsible for all freight related costs, even those that may have not been disclosed as necessary to obtain the product at the time the order is placed, these can include but are not limited to: lift gates, limited access location charges, and construction zone deliveries.

INSPECT FREIGHT IMMEDIATELY UPON DELIVERY. All damage that occurs during the transit is the responsibility of the freight company and therefore is the responsibility of the owner/purchaser to file freight damage claims directly to the carrier. It is the customer's responsibility to obtain the bill of lading and document what has been received. Per federal law, the bill of lading will be used for all disputes. All freight damage must be noted on the bill of lading. Damage to packaging and any suspected hidden damage should be noted on the bill of lading and the Customer must contact the freight carrier within three days of delivery.

Any packaging requirements other than the standards used by Spectrum Aquatics will be invoiced as an extra charge.

Returns/Restocking Fee: Products may not be returned to Spectrum Aquatics without prior approval. It is the responsibility of the customer to obtain a return materials authorization (RMA) number from the Spectrum Aquatics parts and warranty department prior to returning materials. If items are returned without an RMA the freight will be refused and the customer will be responsible for all freight costs. The RMA number must be written on the outside of each package that is being returned. Spectrum Aquatics will reject items returned without a legible RMA number.

Returns must be sent with freight prepaid and are subject to a restocking charge of 25% of the purchase price. Items must be returned within 30 days of issuance of a RMA; if not returned within 30 days the RMA will be canceled. All freight costs associated with returns from the desired shipping point to Spectrum Aquatics are the customer's responsibility. Materials that qualify for return must be returned within 90 days of invoice date. All materials returned must be in a new and unused condition to warrant any credit consideration.

Shortage of Goods or Damaged Goods: Claims for shortages must be made in writing to the Spectrum Aquatic's parts and warranty department within three days after delivery of goods. If notice is not received in writing within this time frame, Spectrum Aquatics will conclusively presume that the goods were delivered in their entirety. Unless agreed upon otherwise in writing, Spectrum Aquatics reserve the right to make partial shipments and to submit invoices for partial shipments.

Delay or Non-Delivery: Spectrum Aquatics is not liable and shall be indemnified for any delay in delivery or failure to deliver hereunder when delivery has been made by impractical by fire, flood, embargo, strike, differences with employees, accidents, acts of God, failure or inability to secure materials from usual sources of supply or any other circumstances beyond the control of Spectrum Aquatics.

Buyer's Financial Condition: Spectrum Aquatics reserves the right to refuse service, terminate accounts, cancel orders, modify any payment terms or require full or partial payment or adequate assurance of performance from the Customer, without liability to Spectrum Aquatics. Should the customer experience a material adverse change in their financial condition or if reasonable grounds for insecurity arise with respect to the customer's performance of this agreement then Spectrum Aquatics reserves the right to modify payment terms include shortening the payment period, requiring advance payment, or requiring payment of cash on delivery. Spectrum Aquatics reserves the right to cancel buyer's credit at any time for any reason, without notice. The foregoing remedies are in addition to Spectrum Aquatics other rights and remedies under this agreement and under applicable law, including Section 2-609 of the Uniform Commercial Code.

Indemnification: Buyer agrees to indemnify, defend and hold harmless Spectrum Aquatics, its directors, officers, employees, agents, successors and assigns from and against any and all damages, losses, expenses, costs (including without limitation reasonable attorney's and accountant's fees), claims, suits, actions, judgments or other liability asserted against or incurred by Spectrum Aquatics arising out of the customer's breach of its obligations hereunder, customer's negligence or misconduct, or customer's misuse or misapplication of the products or service items or damage to the products or service items caused by the customer or its employees, agents or customers.

Note

- Product descriptions may vary

Spectrum Aquatics® Warranty

TWO YEAR LIMITED WARRANTY: PARTS

THREE YEAR LIMITED WARRANTY: STAINLESS STEEL DECK EQUIPMENT AND AQUATIC LIFT FRAME

What is covered by this warranty? Spectrum Aquatics® warrants all products it manufactures to be free from defects in materials and factory workmanship to the original buyer. This warranty is contingent upon the proper installation, use, care and operation of the equipment for its intended purpose, and does not cover equipment that has been modified or has been subjected to physical abusive or environmental stresses. Spectrum Aquatics® agrees to repair or replace, at its sole discretion, any product that fails to perform as specified within the specified warranty period, unless otherwise noted. In cases where the warranty card is not returned to Spectrum Aquatics, the beginning date for the warranty period will be the date that the pool lift was shipped from Spectrum

This warranty relates only to defects in materials and workmanship and does not include damage or failure resulting from other causes, including, but not limited to, acts of God, misuse or abuse, accident or negligence, fire, improper installation or ice damage. This warranty does not apply to fading of materials or to any corrosion of any metallic parts. Damage induced by the improper use of chemicals is not covered by this warranty. In the event that products are altered or repaired by anyone without the prior written approval of Spectrum Aquatics®, all warranties are voided.

What will Spectrum do related to the product covered by this warranty? Spectrum shall provide, F.O.B. the factory, new or reconditioned replacement product or parts (Spectrum's option). This warranty does not cover labor to remove or install equipment and parts.

What is not covered by this warranty? Damage or loss in transit as indicated by bill of lading, normal wear and tear, chemical damage, discoloration, misuse and damage or loss caused by neglect, abuse, vandalism, modification, improper installation, lack of proper maintenance (such as keeping products clean, lubricating battery contacts on lifts, etc.) or physical damage are not included in this warranty. See owner's manual for recommendations related to the use and care of the product.

Powder Coated Products: This warranty does not cover chipping, flaking, scratches or any other surface defect due to abuse, mishandling of product, or lack of maintenance and care. Due to the corrosive environments, this warranty does not cover surfaces damaged during handling or installation. Although powder coating on product is designed for long-term use, keeping products outside in the elements, inside a highly humid environment, excessive washing (including power washing) or improper maintenance may result in premature corrosion.

Parts: Components of products provided by other manufacturers are subject to the original equipment manufacturers (OEM) warranty. Examples include but not limited to batteries, actuators, control systems, valves, pumps, bearing, etc.

IMPORTANT: TO ENSURE SAFE OPERATION, USERS MUST COMPLY WITH THE PUBLISHED WEIGHT LIMITS ON SEVERAL PRODUCTS SUCH AS SLIDES, LIFTS, CHAIRS, STARTING PLATFORMS, STANDS AND LADDERS. REFER TO PRODUCT LITERATURE AND MANUALS FOR THESE LIMITATIONS.

To make a warranty claim, contact:

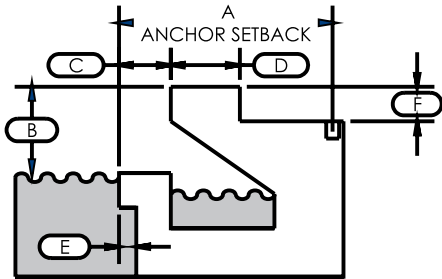
Spectrum Aquatics® 7100 Spectrum Lane Missoula, MT 59808 info@spectrumproducts.com 800.791.8056

Spectrum Aquatics® disclaims all liability for damage during transportation, for incidental, special or consequential damage of whatever nature, for damage due to handling, installation, or improper operation, or for damage caused by circumstances beyond Spectrum Products™ control; in no event shall recovery of any kind against Spectrum Products™ be greater in amount than the purchase price of the equipment sold by Spectrum Aquatics® that caused alleged damage. Spectrum Aquatics® makes no warranties either expressed or implied, including any warranty of merchantability or fitness for particular purpose, other than these stated.

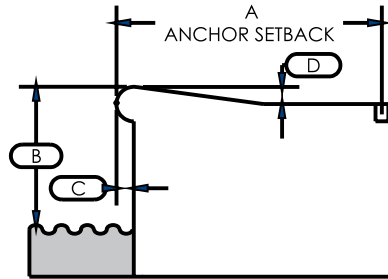
Some states do not allow the exclusion or limitation of incidental or consequential damages, or limitations on how long on implied warranty lasts, so the above exclusions may not apply to you. No representative has authority to change or modify this warranty in any respect.

GUTTER MEASURING GUIDE

RECESSED GUTTER

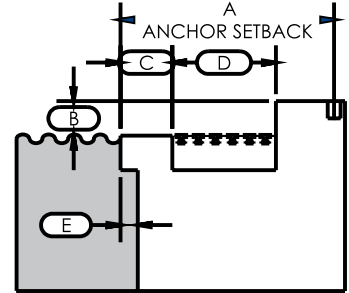


BULL NOSE COPING



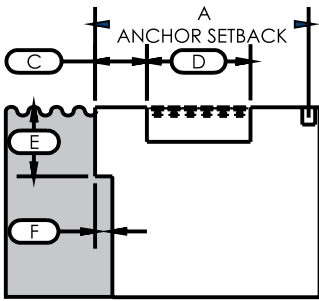
TROUGH GUTTER

Carpenters level r required

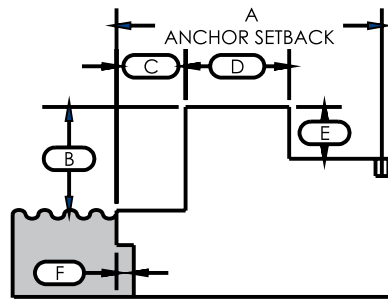


SLOPE = X:24" X

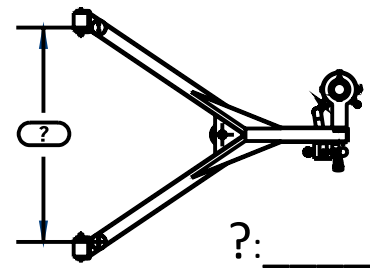
RIM FLOW GUTTER



HAUNCH GUTTER



If you have current anchors for your water powered lift, please verify the anchor to anchor dimension



A: _____

B: _____

C: _____

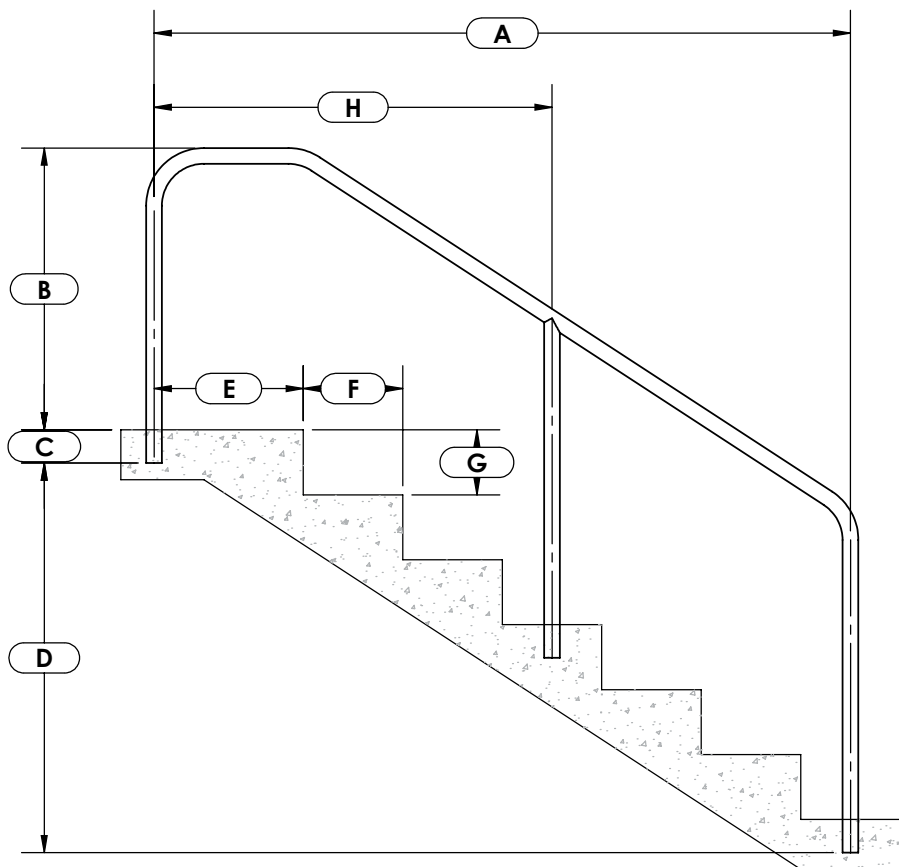
D: _____

E: _____

F: _____

MEASURE GUIDE HANDRAIL

FORM MG-SRD



	DESCRIPTION	MEASUREMENT
A	RAIL WIDTH	
B	RAIL HEIGHT	
C	ANCHOR DEPTH	
D	OVERALL DROP	
E	RAIL SETBACK	
F	STEP RUN	
G	STEP RISE	
H	POST LOCATION *(OPTIONAL)	

NOTE:

Field measurements are required for the product you wish to order. Please provide accurate measurements to eliminate delays or errors in the design and manufacturing.

*Post Required: Post Spacing on 304 and 316 series stainless steel rails. (ADA Guidelines)

**Also available in 316 series stainless steel

It is the responsibility of the customer to ensure the handrail meets all local and state codes.

X	MATERIAL	*POST RECOMMENDED
	1.90"x.065" 304 SERIES S.S. TUBE **	56" AND LONGER
	1.90"x.109" 304 SERIES S.S. TUBE **	87" AND LONGER
	1.90"x.145" 304 SERIES S.S. TUBE **	109" AND LONGER
	1.50"x.083" 316 SERIES S.S. TUBE	42" AND LONGER
	1.50"x.120" 316 SERIES S.S. TUBE	56" AND LONGER



7100 Spectrum Lane
 Missoula, Montana 59808
 406.542.9781 * 800.791.8056
 Fax: 406.542.1158
 www.spectrumproducts.com

Submitted By: _____

Signature: _____

Date: _____



7100 SPECTRUM LANE – MISSOULA MT. – 59808

800.791.8056 | INFO@SPECTRUMPRODUCTS.COM | SPECTRUMPRODUCTS.COM